



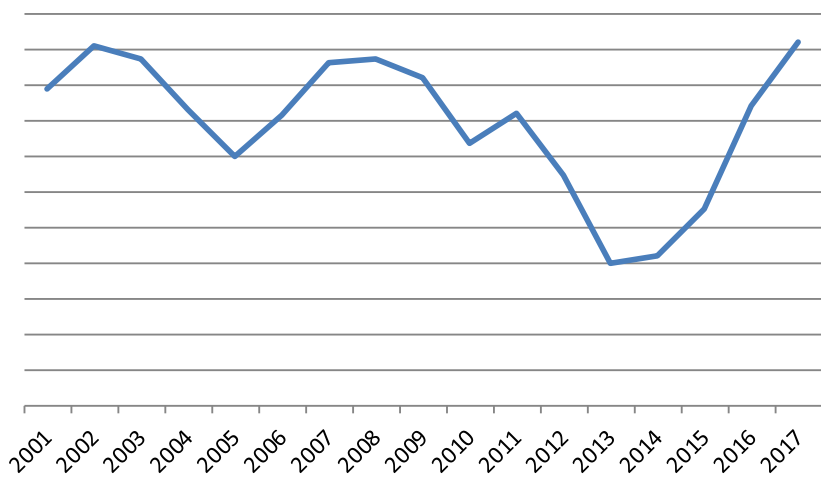
Regional Economic Overview

By Chris Rich - Eastern Oregon Regional Economist

October 23, 2018

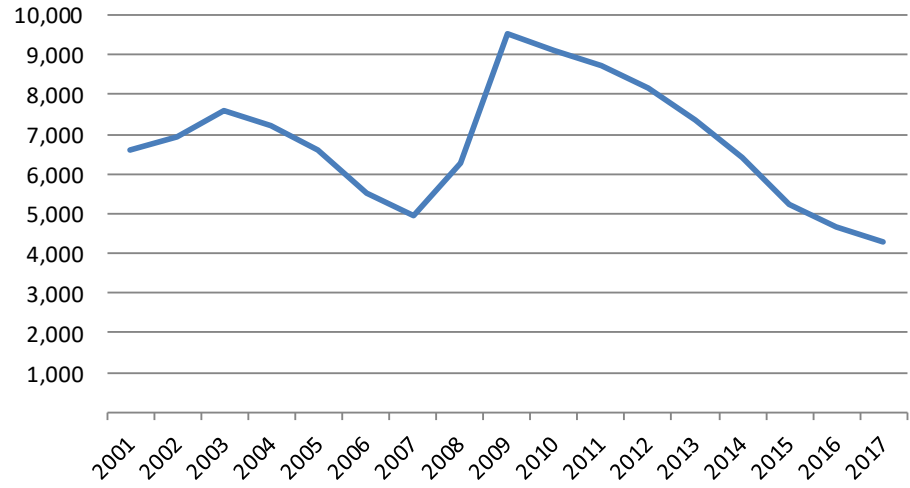


Eastern Oregon Employed

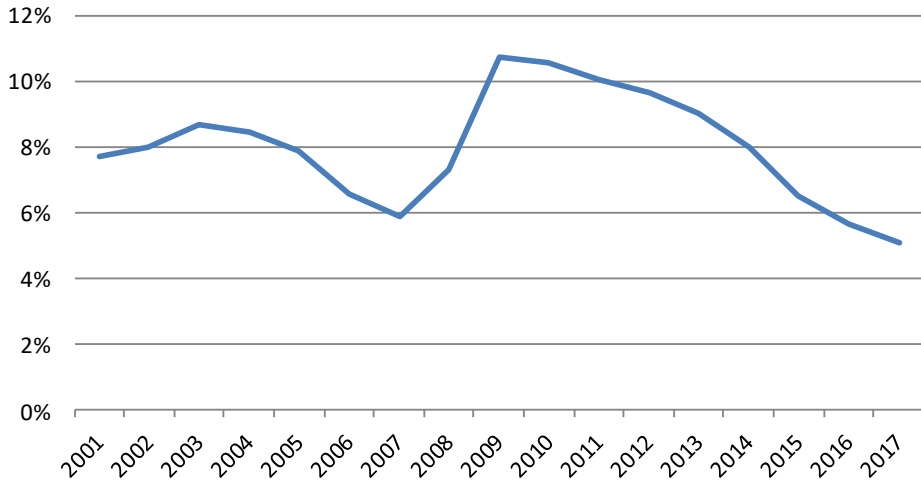


Source: Oregon Employment Department,
Local Area Unemployment Statistics

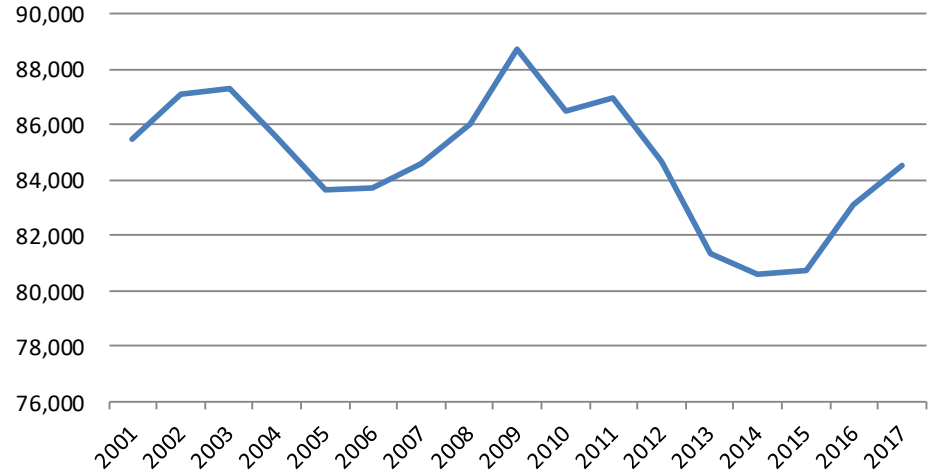
Eastern Oregon Unemployed



Eastern Oregon Unemployment Rate



Eastern Oregon Civilian Labor Force



Source: Oregon Employment Department,
Local Area Unemployment Statistics



Private Industries in Growth or Decline, 2007 - 2017

EO Growth Industries	Eastern Oregon		Oregon	
	Change	% Change	Change	% Change
Education and health services	1,540	22.3%	61,600	29.2%
Manufacturing	330	4.0%	(14,400)	-7.1%
Information	274	38.1%	(1,600)	-4.5%
Transportation, warehousing, and utilities	230	5.4%	4,000	6.8%
Transportation, warehousing, and utilities**	10	0.6%	4,000	6.8%
Professional and business services**	170	11.0%	40,700	20.1%
EO Industries in Decline				
Professional and business services	(730)	-19.3%	40,700	20.1%
Financial activities	(490)	-20.2%	(6,800)	-6.4%
Manufacturing*	(480)	-6.6%	(14,400)	-7.1%
Construction	(283)	-10.3%	(6,600)	-6.3%
Information*	(80)	-11.4%	(1,600)	-4.5%

*Note: Manufacturing Excludes Harney, *Excludes Morrow, **Excludes Umatilla*

Source: Oregon Employment Department, CES and QCEW



Private Industries in Growth or Decline, 2015 - 2017

	Eastern Oregon		Oregon	
	Change	% Change	Change	% Change
EO Growth Industries				
Education and health services	280	3.4%	16,100	6.3%
Manufacturing*	420	6.6%	3,500	1.9%
Manufacturing	360	4.4%	3,500	1.9%
Leisure and hospitality	300	5.0%	14,500	7.6%
Construction*	242	11.7%	14,300	17.2%
Retail trade	232	2.8%	7,000	3.4%
Information	165	19.9%	1,200	3.6%
EO Industries in Decline				
Construction	(104)	-4.1%	14,300	17.2%
Financial activities	(40)	-2.0%	4,800	5.1%
Information*	(10)	-1.6%	1,200	3.6%

*Note: Manufacturing Excludes Harney, *Excludes Morrow, **Excludes Umatilla*

Source: Oregon Employment Department, CES and QCEW



Eastern Oregon Businesses

Year	Total	Private Sector
2001	5,497	4,998
2007	5,906	5,246
2015	6,244	5,559
2017	6,347	5,672

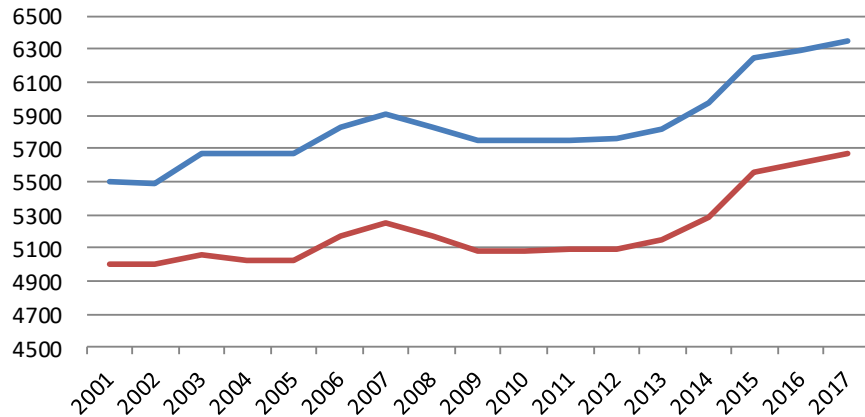
Source: Oregon Employment Department, QCEW

Eastern Oregon Total Wages

Year	Total		Private Sector	
	Unadjusted	2017 Dollars	Unadjusted	2017 Dollars
2001	\$1,703,412,375	\$2,357,659,000	\$1,164,027,162	\$1,611,106,714
2007	\$2,127,896,809	\$2,515,599,608	\$1,464,516,420	\$1,731,351,312
2015	\$2,575,444,776	\$2,663,499,233	\$1,823,343,412	\$1,885,683,523
2017	\$2,798,327,249	\$2,798,327,249	\$1,989,134,885	\$1,989,134,885

Source: Oregon Employment Department, QCEW

Eastern Oregon Business Units Total & Private, 2001 - 2017



Eastern Oregon Annual Average Wage

Year	Total		Private Sector	
	Unadjusted	2017 Dollars	Unadjusted	2017 Dollars
2001	\$25,294	\$35,009	\$23,261	\$32,196
2007	\$30,485	\$36,040	\$28,282	\$33,435
2015	\$36,808	\$38,066	\$34,496	\$35,676
2017	\$38,503	\$38,503	\$36,084	\$36,084

Source: Oregon Employment Department, QCEW



**Number of Jobs by Wage Category
All Industries - Third Quarter 2017**

	Under \$15.00	\$15.00 - \$19.99	\$20.00 - \$29.99	\$30.00 - \$39.99	\$40.00 or more
Oregon	752,288	399,931	428,042	215,510	371,426
Baker	2,743	1,198	1,100	401	489
Grant	1,157	533	520	194	289
Harney	1,099	513	438	179	227
Malheur	8,258	2,621	2,305	1,051	1,190
Morrow	2,788	1,520	1,591	682	820
Umatilla	18,974	7,338	6,356	2,649	3,575
Union	4,773	2,224	2,548	943	1,102
Wallowa	1,325	750	529	181	245
Eastern Oregon	41,116	16,696	15,387	6,279	7,937

Source: Oregon Employment department

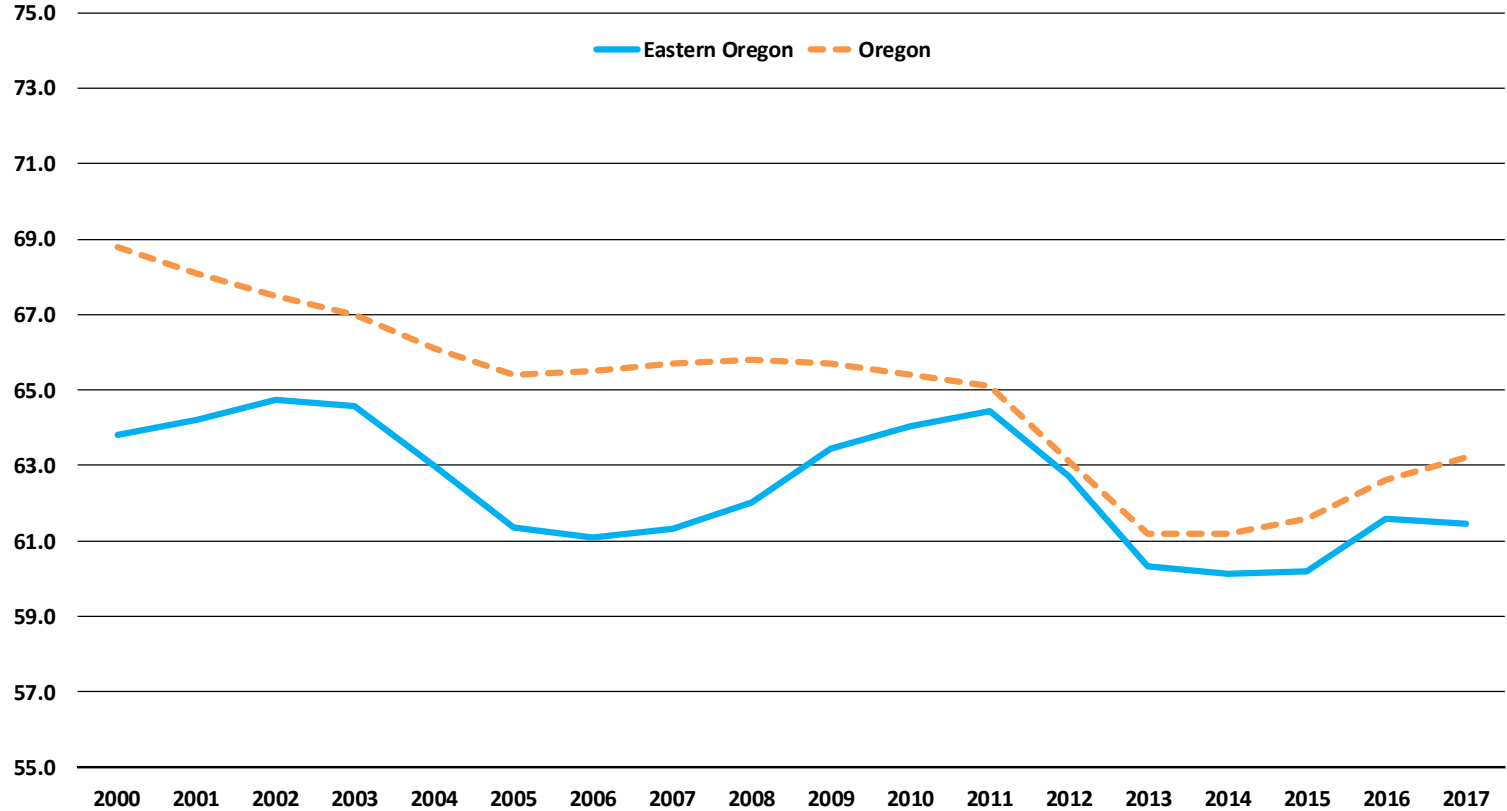
**Percent of Jobs by Wage Category
All Industries - Third Quarter 2017**

	Under \$15.00	\$15.00 - \$19.99	\$20.00 - \$29.99	\$30.00 - \$39.99	\$40.00 or more
Oregon	34.7%	18.5%	19.8%	9.9%	17.1%
Baker	46.2%	20.2%	18.5%	6.8%	8.3%
Grant	43.0%	19.8%	19.3%	7.2%	10.7%
Harney	44.8%	20.9%	17.9%	7.3%	9.2%
Malheur	53.5%	17.0%	14.9%	6.8%	7.7%
Morrow	37.7%	20.5%	21.5%	9.2%	11.1%
Umatilla	48.8%	18.9%	16.3%	6.8%	9.2%
Union	41.2%	19.2%	22.0%	8.1%	9.5%
Wallowa	43.7%	24.7%	17.5%	6.0%	8.1%
Eastern Oregon	47.0%	19.1%	17.6%	7.2%	9.1%

Source: Oregon Employment department



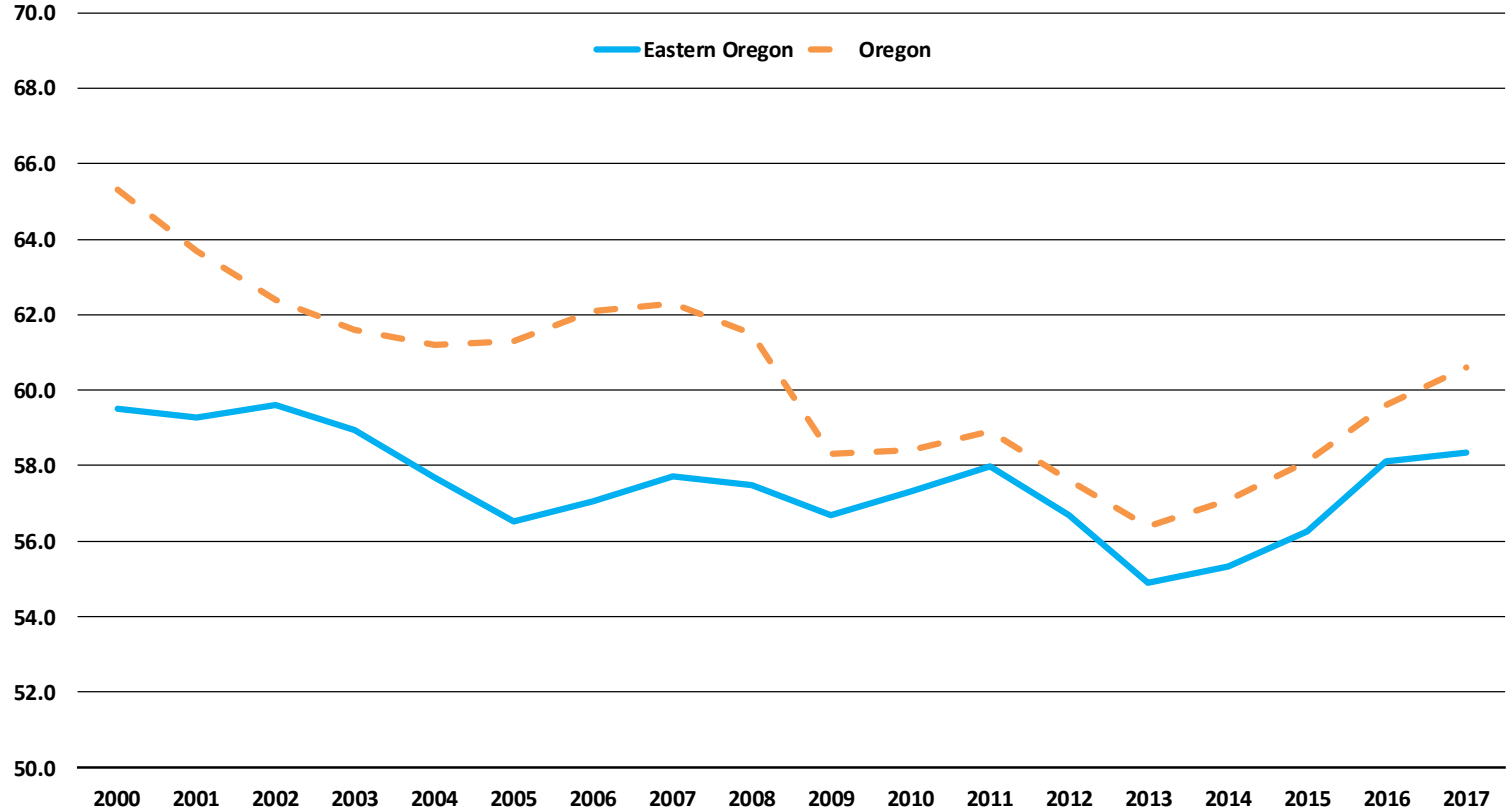
Labor Force Participation Rate, 2000 - 2017



Source: Oregon Employment department, Local Area Unemployment Statistics



Employment to Population Ratio, 2000 - 2017



Source: Oregon Employment department, Local Area Unemployment Statistics



Job Vacancies in Eastern Oregon

	<u>Vacancies</u>
Spring 2017	2,059
Spring 2018	3,057

Source: Oregon Employment Department, Job Vacancy Survey

Top Ten Online Job Adds in Eastern Oregon - June 2018

<u>SOC Code</u>	<u>Occupational Group</u>	<u>Total Ads</u>
	All Occupational Groups	2,288
29-0000	Healthcare Practitioners and Technical Occupations	340
53-0000	Transportation and Material Moving Occupations	241
43-0000	Office and Administrative Support Occupations	203
25-0000	Education Library and Training Occupations	197
49-0000	Installation, Maintenance, and Repair Occupations	163
41-0000	Sales and Related Occupations	141
11-0000	Management Occupations	126
21-0000	Community and Social Service Occupations	112
47-0000	Construction and Extraction Occupations	81
35-0000	Food Preparation and Serving Related Occupations	78
	Top Ten Groups (of 23)	1,682

Source: Conference Board, Help Wanted Online (HWOL)

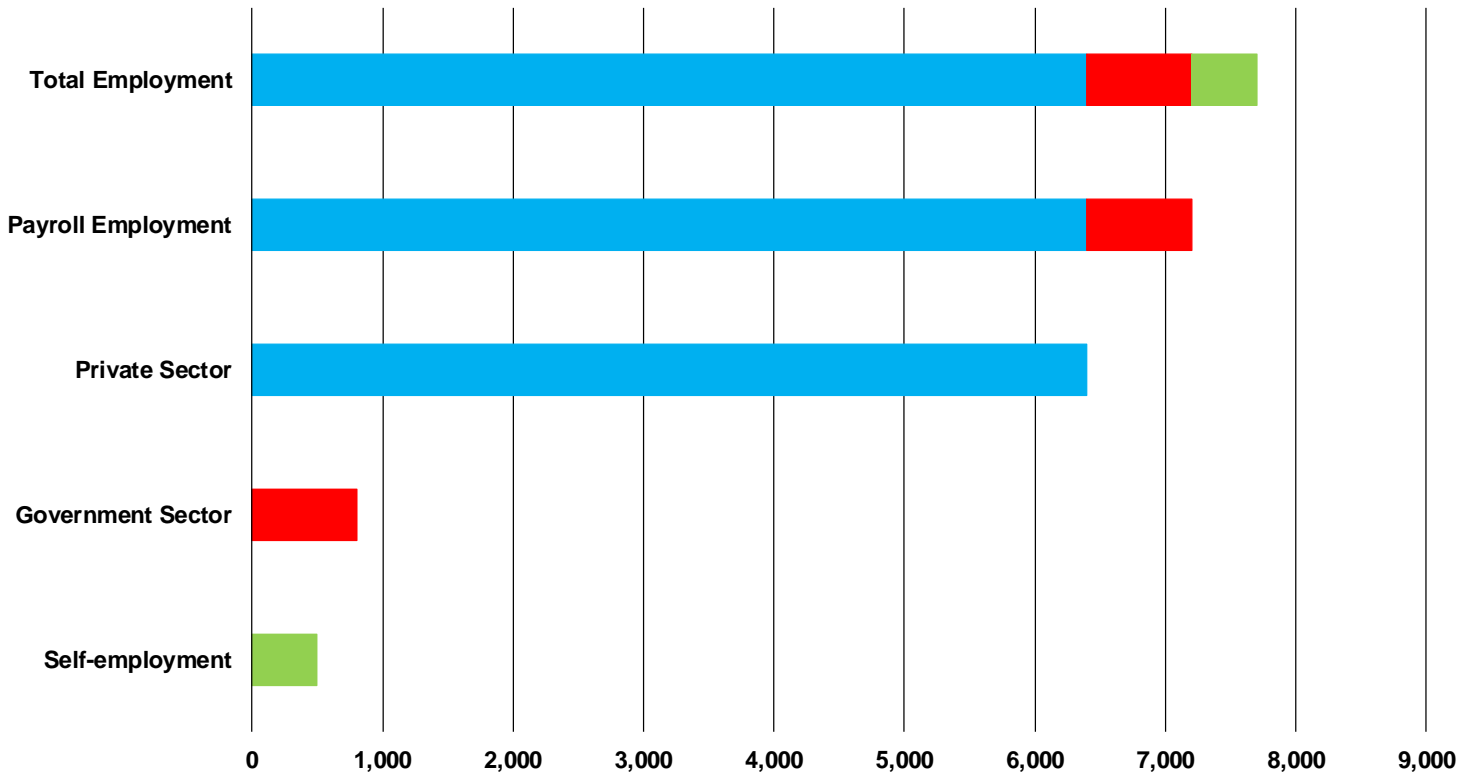
Top Fourteen Online Job Adds in Eastern Oregon - June 2018

<u>SOC Code</u>	<u>Occupation</u>	<u>Total Ads</u>
	All Occupations	2,288
53-3032	Truck Drivers, Heavy and Tractor-Trailer	113
29-1141	Registered Nurses	107
49-9071	Maintenance and Repair Workers, General	69
21-1093	Social and Human Service Assistants	62
41-1011	Supervisors and Managers of Retail Sales Workers	47
15-1151	Computer User Support Specialists	46
25-2031	Secondary School Teachers, Except Special and Care	41
25-2021	Elementary School Teachers, Except Special Educati	37
27-2022	Coaches and Scouts	32
29-1123	Physical Therapists	32
43-4051	Customer Service Representatives	32
53-3033	Truck Drivers, Light or Delivery Services	32
49-1011	Supervisors and Managers of Mechanics, Installers, ar	29
53-7062	Laborers and Freight, Stock, and Material Movers, Han	29
29-1122	Occupational Therapists	28
41-2031	Retail Salespersons	28
25-2022	Middle School Teachers, Except Special and Career/T	26
29-1062	Family and General Practitioners	25
43-1011	Supervisors and Managers of Office and Administrativ	25
43-9061	Office Clerks, General	24
51-1011	Supervisors and Managers of Production and Operatin	24
	Top Fourteen Occupations (of 290)	888

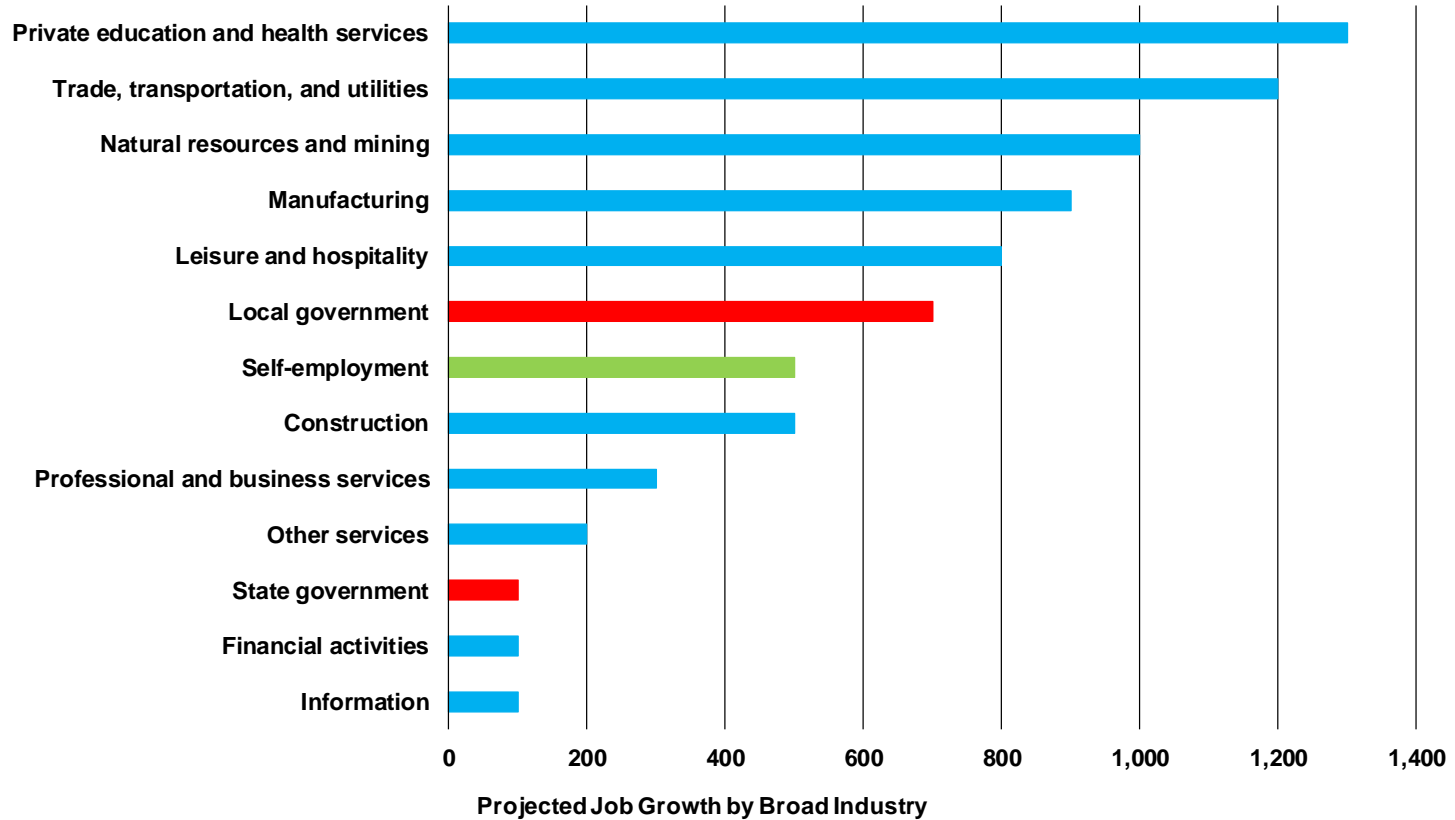
Source: Conference Board, Help Wanted Online (HWOL)



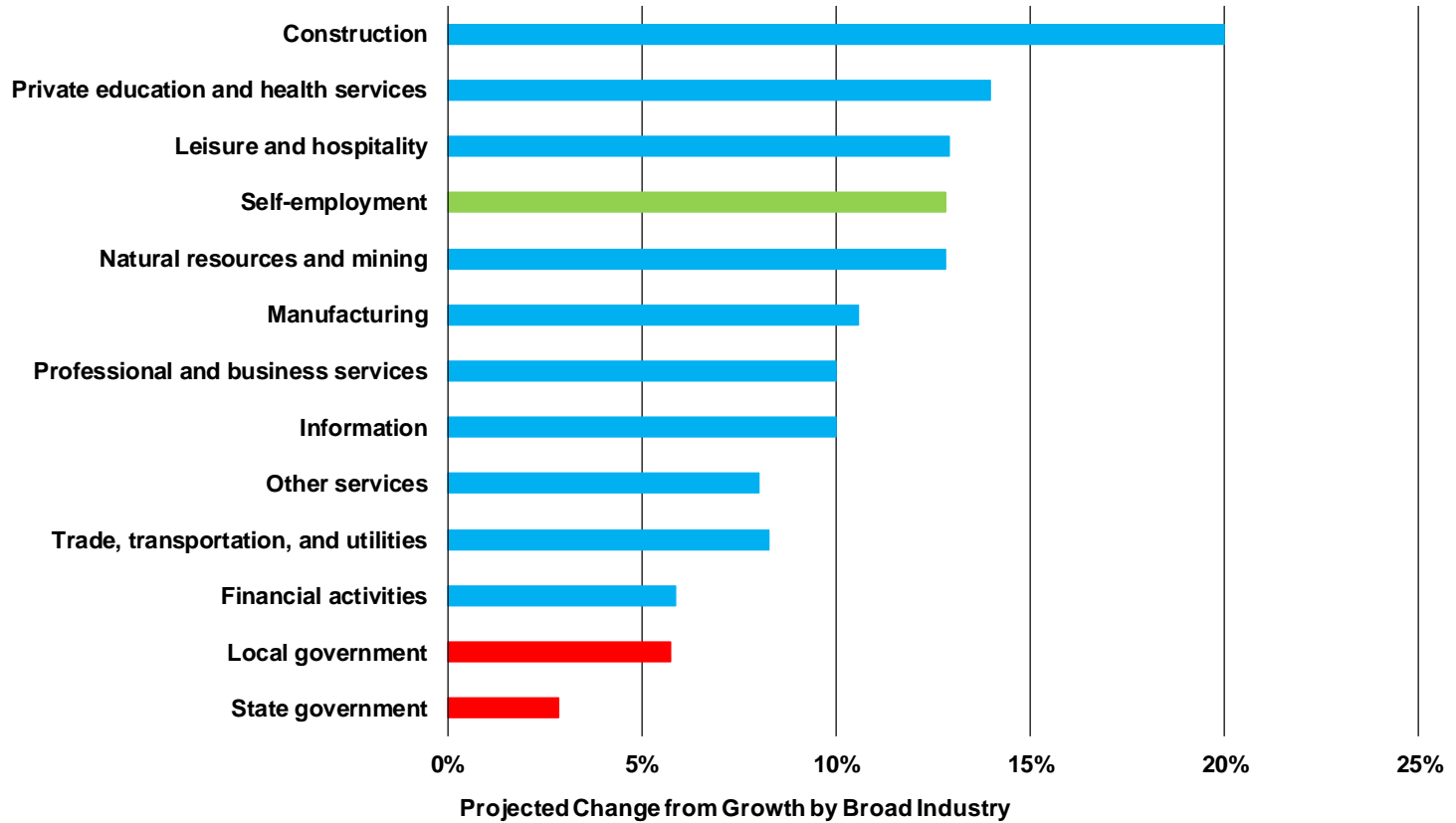
Eastern Oregon's Private Sector - 89% of Growth from 2017-2027



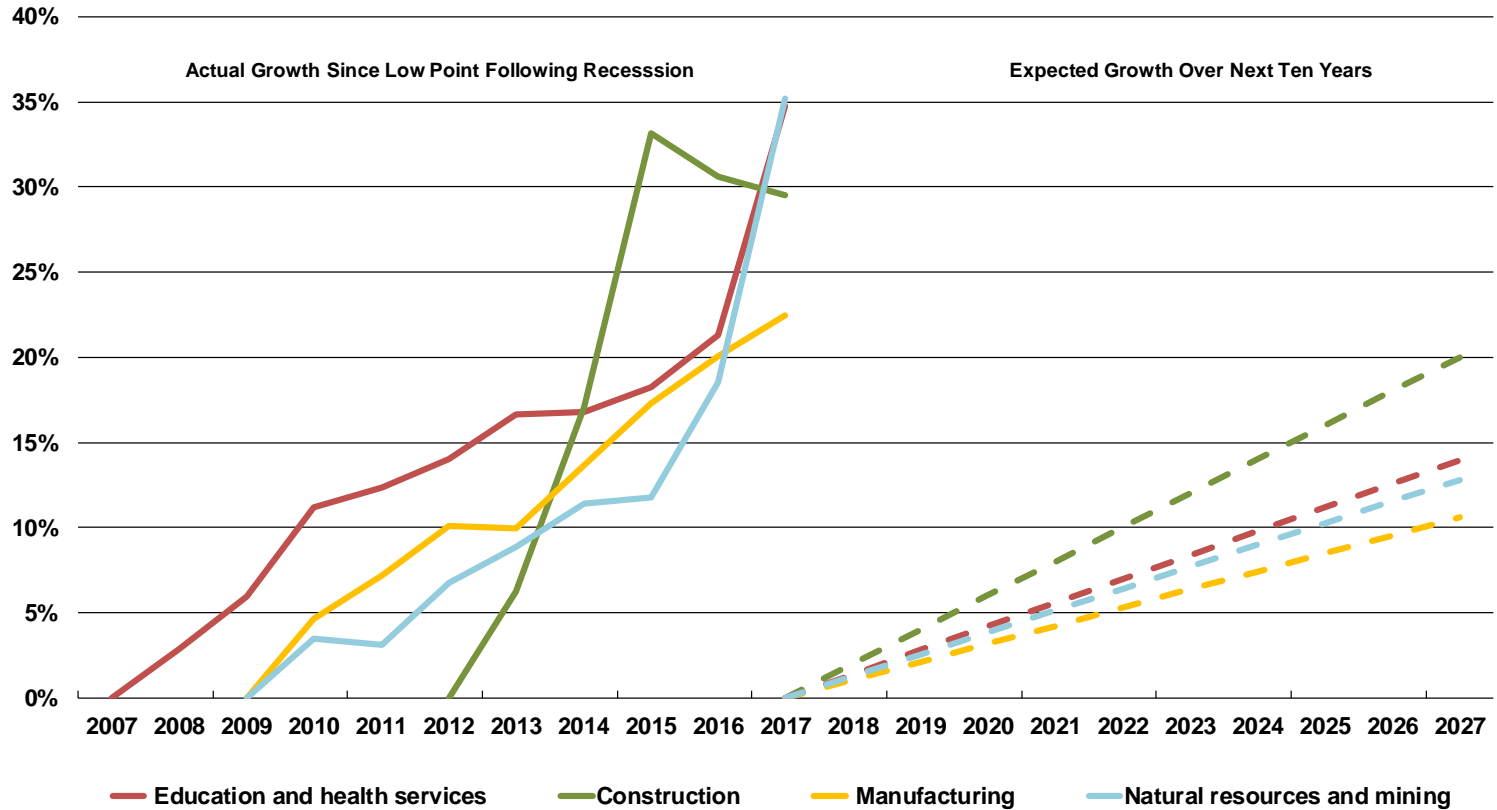
Five Eastern Oregon Industries Expected to Add 800 or More Jobs by 2027



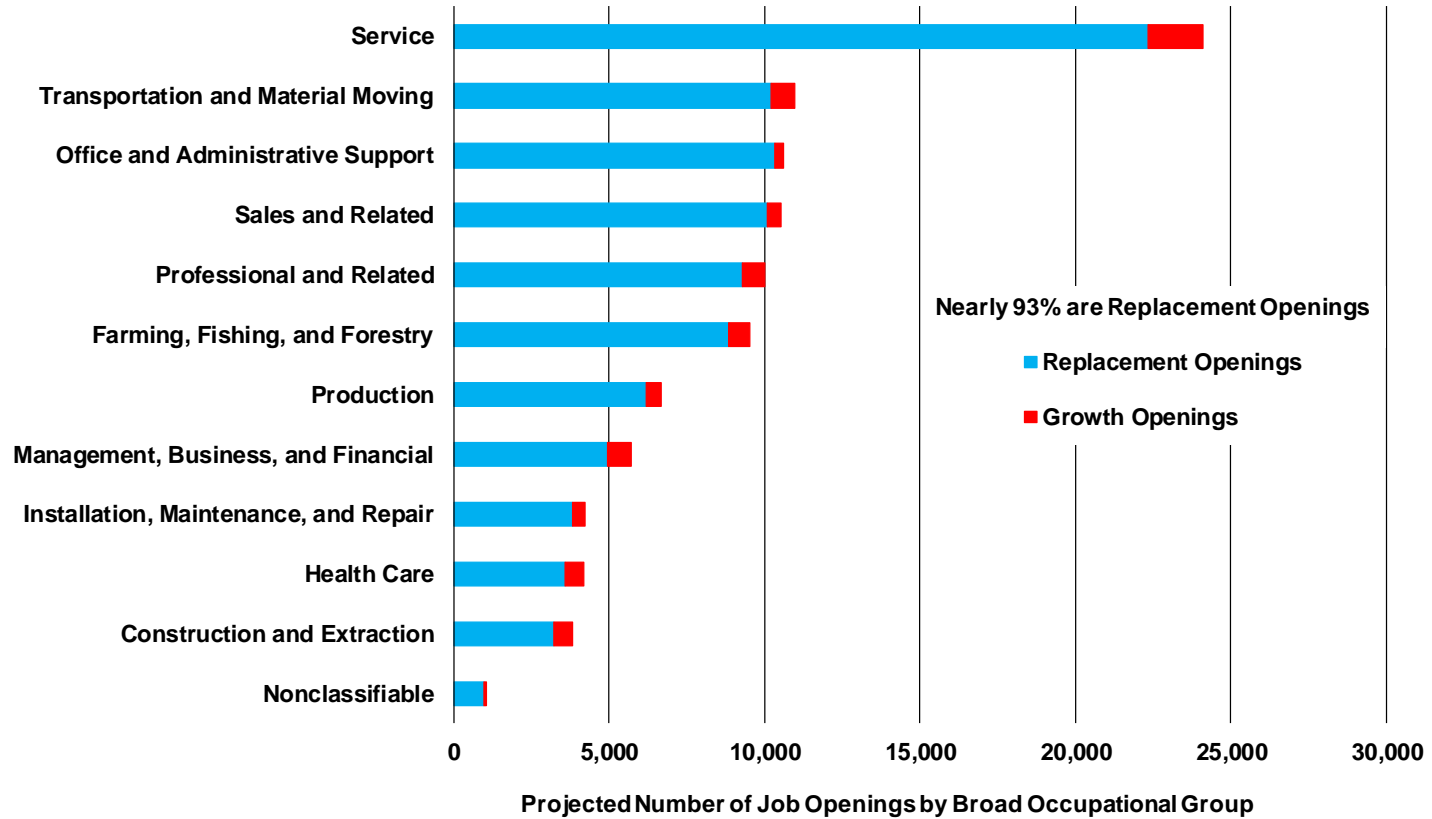
Several Eastern Oregon Industries Expected to Grow 10% or More by 2027



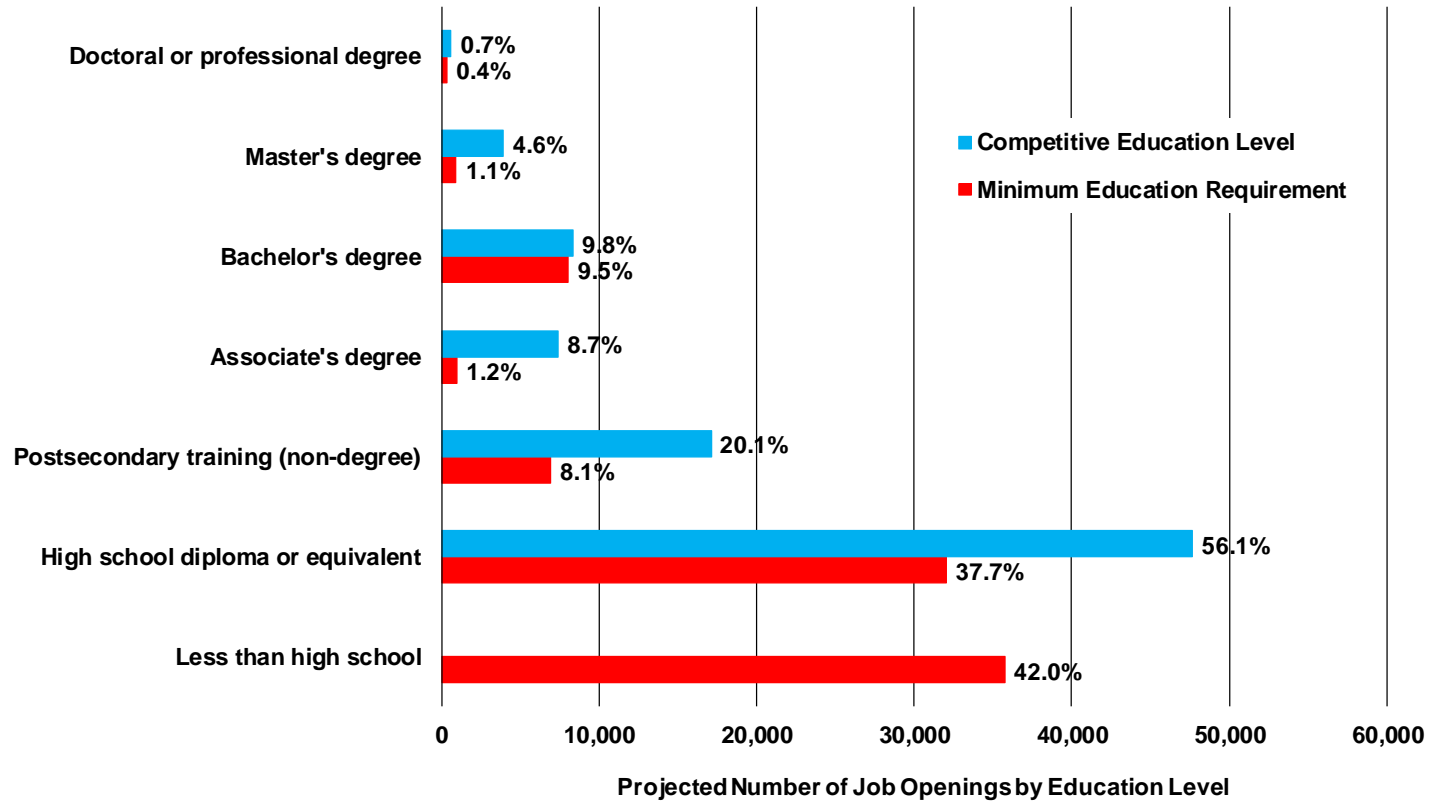
Expected Growth of Top Industries Subdued Compared with Actual Growth



Over 100,000 Job Openings Expected in Eastern Oregon from 2017-2027



A High School Diploma is Competitive for Over Half of Expected Job Openings from 2017-2027



Eastern Oregon Population by County

	Population by Age Group - 2017					Change by Age Group - 2000 to 2017				
	0-17	18-24	25-54	55-64	65 +	0-17	18-24	25-54	55-64	65 +
Oregon	911,641	364,522	1,618,931	534,330	711,675	64,050	35,468	111,311	228,099	271,086
Baker	3,328	843	5,336	2,782	4,461	-628	-231	-1,120	738	1,264
Grant	1,215	337	2,164	1,315	2,384	-755	-156	-983	353	1,033
Harney	1,559	411	2,406	1,210	1,775	-391	-102	-758	370	637
Malheur	7,976	2,921	11,611	3,725	5,611	-775	-446	-851	1,033	1,275
Morrow	3,143	962	4,245	1,620	1,920	-223	-39	-215	624	743
Umatilla	21,441	7,226	30,136	9,625	12,073	1,868	419	575	3,547	3,411
Union	6,337	2,642	8,760	3,587	5,574	202	-213	-788	1,195	1,943
Wallowa	1,461	283	2,118	1,216	2,117	-230	-126	-758	342	747
Eastern Oregon	46,460	15,624	66,777	25,080	35,914	-930	-893	-4,899	8,201	11,053

Source: Portland State University Population Research Center, Annual Population Estimates



Eastern Oregon Population by County

	Population by Age Group - 2017					% Change by Age Group - 2000 to 2017				
	0-17	18-24	25-54	55-64	65 +	0-17	18-24	25-54	55-64	65 +
Oregon	911,641	364,522	1,618,931	534,330	711,675	7.6%	10.8%	7.4%	74.5%	61.5%
Baker	3,328	843	5,336	2,782	4,461	-15.9%	-21.5%	-17.3%	36.1%	39.5%
Grant	1,215	337	2,164	1,315	2,384	-38.3%	-31.7%	-31.2%	36.7%	76.5%
Harney	1,559	411	2,406	1,210	1,775	-20.0%	-19.9%	-24.0%	44.0%	55.9%
Malheur	7,976	2,921	11,611	3,725	5,611	-8.9%	-13.2%	-6.8%	38.4%	29.4%
Morrow	3,143	962	4,245	1,620	1,920	-6.6%	-3.9%	-4.8%	62.6%	63.1%
Umatilla	21,441	7,226	30,136	9,625	12,073	9.5%	6.2%	1.9%	58.4%	39.4%
Union	6,337	2,642	8,760	3,587	5,574	3.3%	-7.4%	-8.3%	49.9%	53.5%
Wallowa	1,461	283	2,118	1,216	2,117	-13.6%	-30.9%	-26.4%	39.1%	54.5%
Eastern Oregon	46,460	15,624	66,777	25,080	35,914	-2.0%	-5.4%	-6.8%	48.6%	44.5%

Source: Portland State University Population Research Center, Annual Population Estimates



Share of Workers by Age Group

2016 3rd Q - 2017 2nd Q

	Total Employment			Private Sector		
	Under 25	25-54	55+	Under 25	25-54	55+
Oregon	10%	66%	24%	11%	66%	23%
Baker	11%	62%	27%	13%	61%	26%
Grant	8%	61%	32%	10%	59%	31%
Harney	9%	59%	32%	13%	57%	30%
Malheur	11%	62%	26%	14%	61%	25%
Morrow	9%	65%	26%	10%	66%	24%
Umatilla	11%	63%	25%	14%	62%	25%
Union	12%	62%	26%	14%	61%	24%
Wallowa	7%	59%	34%	8%	59%	33%
Eastern Oregon	11%	63%	26%	13%	61%	25%

Source: U.S. Census Bureau, QWI - LED Extraction Tool



Population Change

	2017	2015	2007	Two-Year Change		Ten-Year Change	
Oregon	4,141,100	4,013,845	3,745,455	127,255	3.2%	395,645	10.6%
Baker	16,750	16,425	16,435	325	2.0%	315	1.9%
Grant	7,415	7,430	7,580	-15	-0.2%	-165	-2.2%
Harney	7,360	7,295	7,680	65	0.9%	-320	-4.2%
Malheur	31,845	31,480	31,620	365	1.2%	225	0.7%
Morrow	11,890	11,630	12,335	260	2.2%	-445	-3.6%
Umatilla	80,500	79,155	72,245	1,345	1.7%	8,255	11.4%
Union	26,900	26,625	25,250	275	1.0%	1,650	6.5%
Wallowa	7,195	7,100	7,130	95	1.3%	65	0.9%
Eastern Oregon	189,855	187,140	180,275	2,715	1.5%	9,580	5.3%

Source: Portland State University Population Research Center, Annual Population Estimates



Eastern Oregon Components of Population Change

	July 1, 2017 Population Estimate	April 1, 2010 Census Population	Population Change 2010-17	Percent Change 2010-17	Average Annual Change since Census	Births 2010-17	Deaths 2010-17	Natural Increase 2010-17	Net Migration 2010-17
Oregon	4,141,100	3,831,074	310,026	8.1%	1.1%	328,624	247,025	81,599	228,427
Baker	16,750	16,134	616	3.8%	0.5%	1,203	1,493	-290	906
Grant	7,415	7,445	-30	-0.4%	-0.1%	452	596	-144	114
Harney	7,360	7,422	-62	-0.8%	-0.1%	587	622	-35	-27
Malheur	31,845	31,313	532	1.7%	0.2%	3,143	2,213	931	-399
Morrow	11,890	11,173	717	6.4%	0.9%	1,168	555	613	104
Umatilla	80,500	75,889	4,611	6.1%	0.8%	7,703	4,654	3,050	1,561
Union	26,900	25,748	1,152	4.5%	0.6%	2,188	1,887	301	851
Wallowa	7,195	7,008	187	2.7%	0.4%	435	622	-187	374
Eastern Oregon	189,855	182,132	7,723	4.2%	0.6%	16,879	12,641	4,239	3,484

Source: Portland State University Population Research Center, Annual Population Estimates



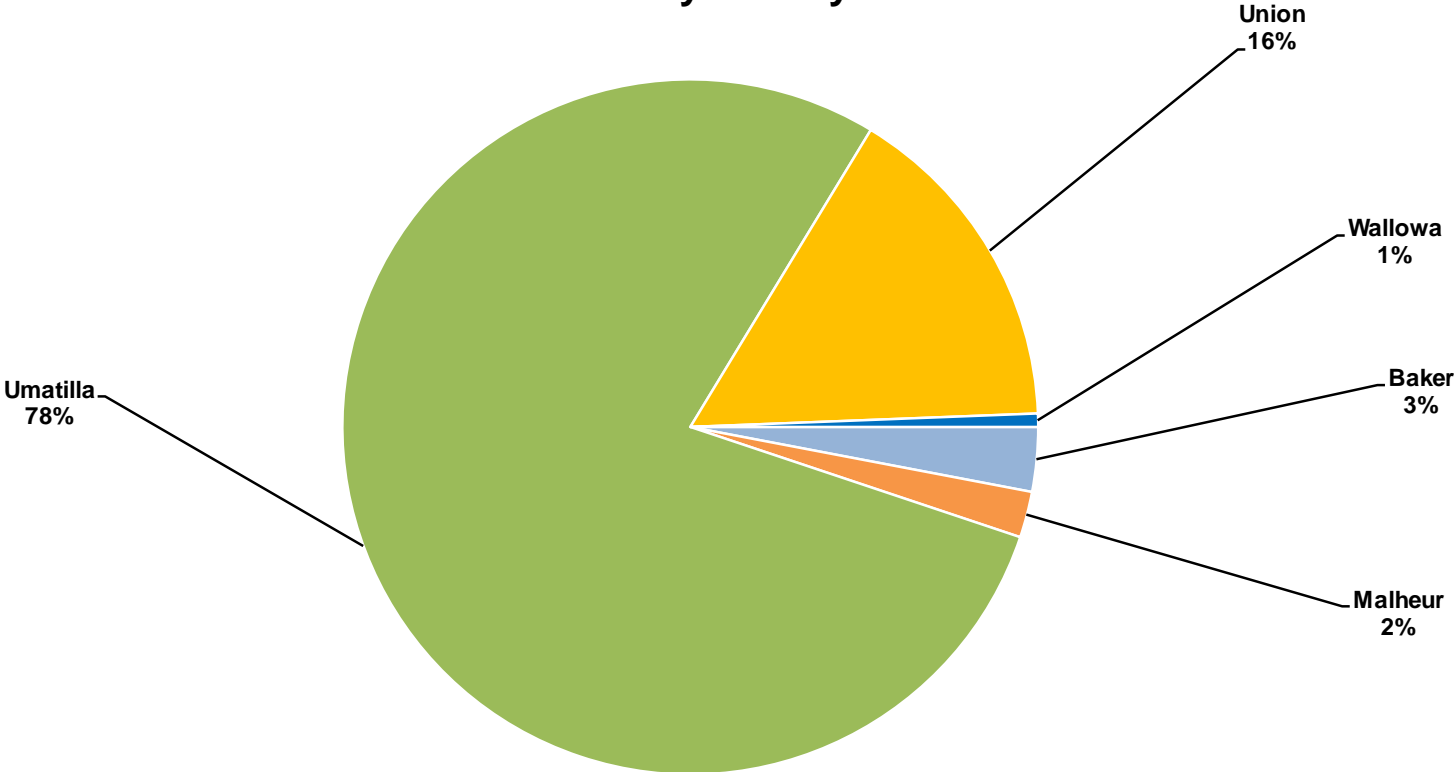
Eastern Oregon Major City Population Change, 2007 - 2017

	2017	2007	Change 2007-17	% Change 2007-17
Portland	613,355	529,121	84,234	15.9%
Baker City	9,890	10,105	-215	-2.1%
John Day	1,735	1,850	-115	-6.2%
Burns	2,830	3,020	-190	-6.3%
Hines	1,560	1,825	-265	-14.5%
Ontario	11,465	11,325	140	1.2%
Boardman	3,635	3,310	325	9.8%
Heppner	1,295	1,415	-120	-8.5%
Pendleton	16,890	17,260	-370	-2.1%
Hermiston	17,985	15,780	2,205	14.0%
La Grande	13,245	12,850	395	3.1%
Enterprise	1,985	1,940	45	2.3%
Joseph	1,120	1,100	20	1.8%
EO Pop. Centers	83,635	81,780	1,855	2.2%

Source: Portland State University Population Research Center, Annual Population Estimates



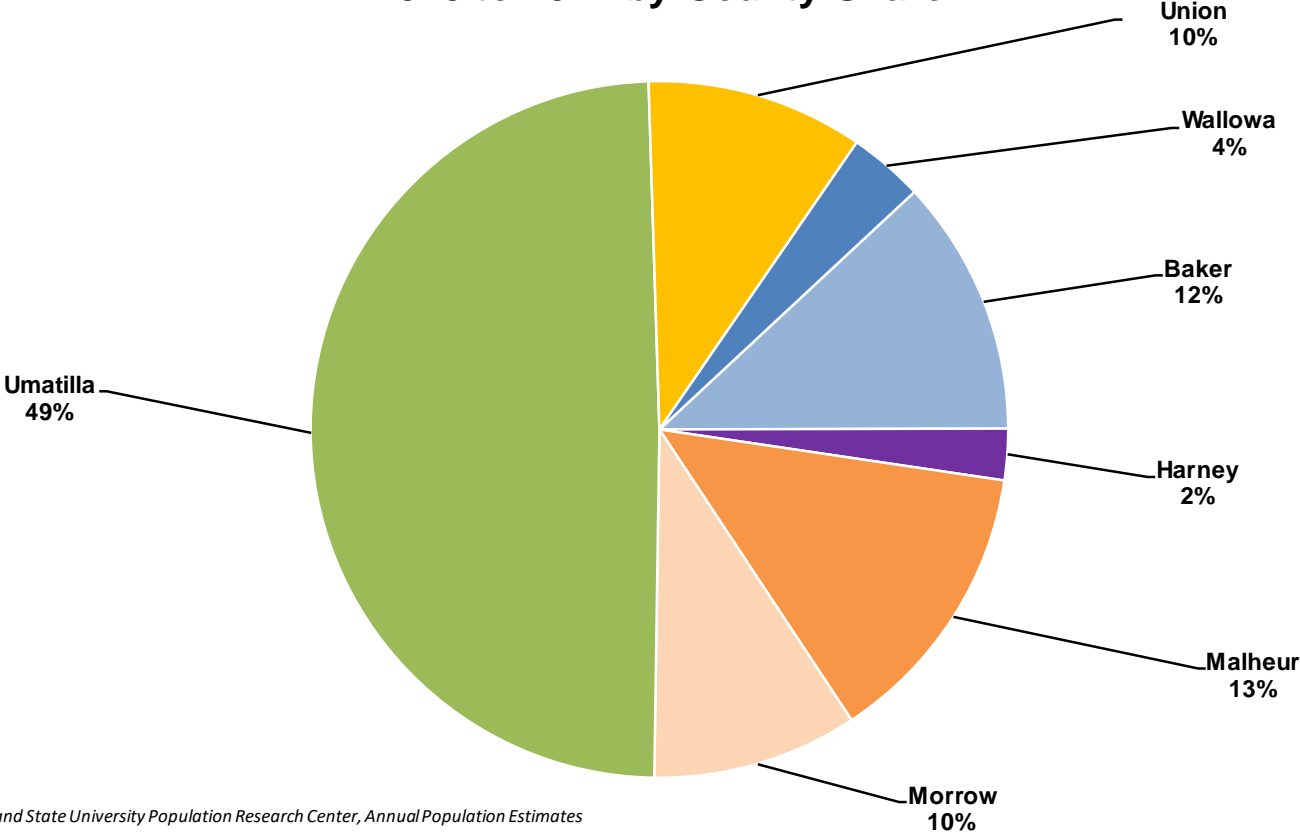
Eastern Oregon Population Growth 2007 to 2017 by County Share



Source: Portland State University Population Research Center, Annual Population Estimates



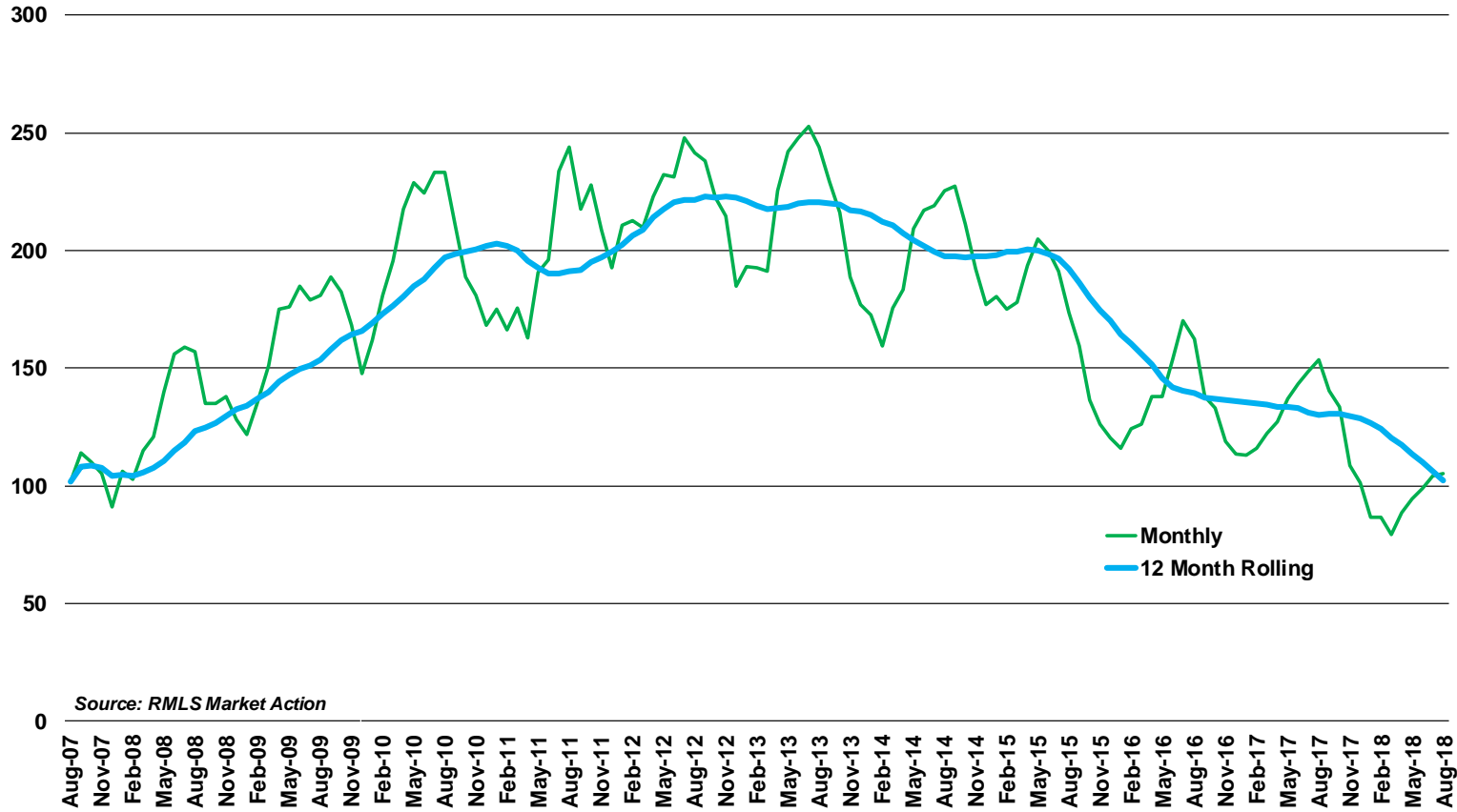
Eastern Oregon Population Growth 2015 to 2017 by County Share



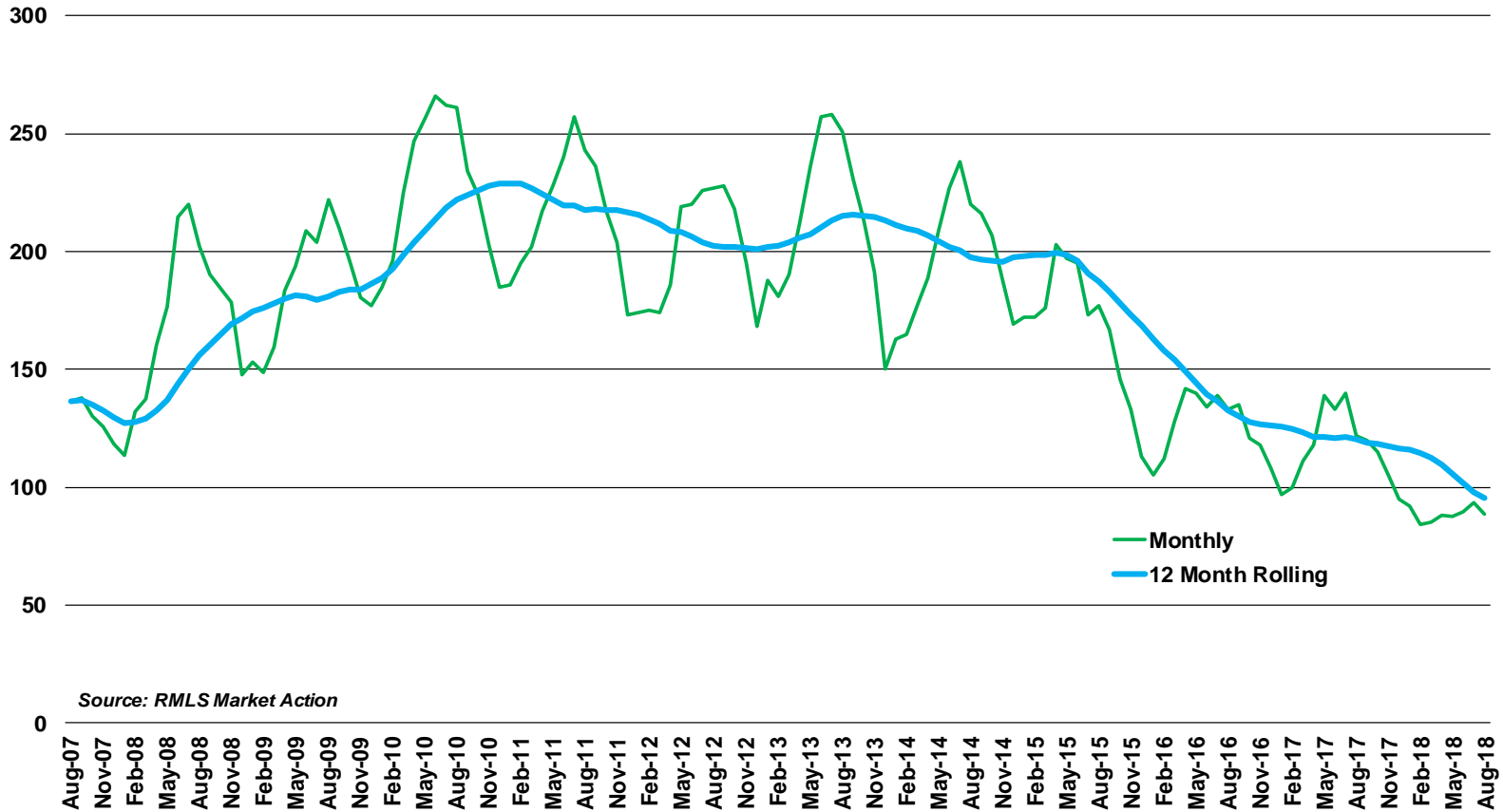
Source: Portland State University Population Research Center, Annual Population Estimates



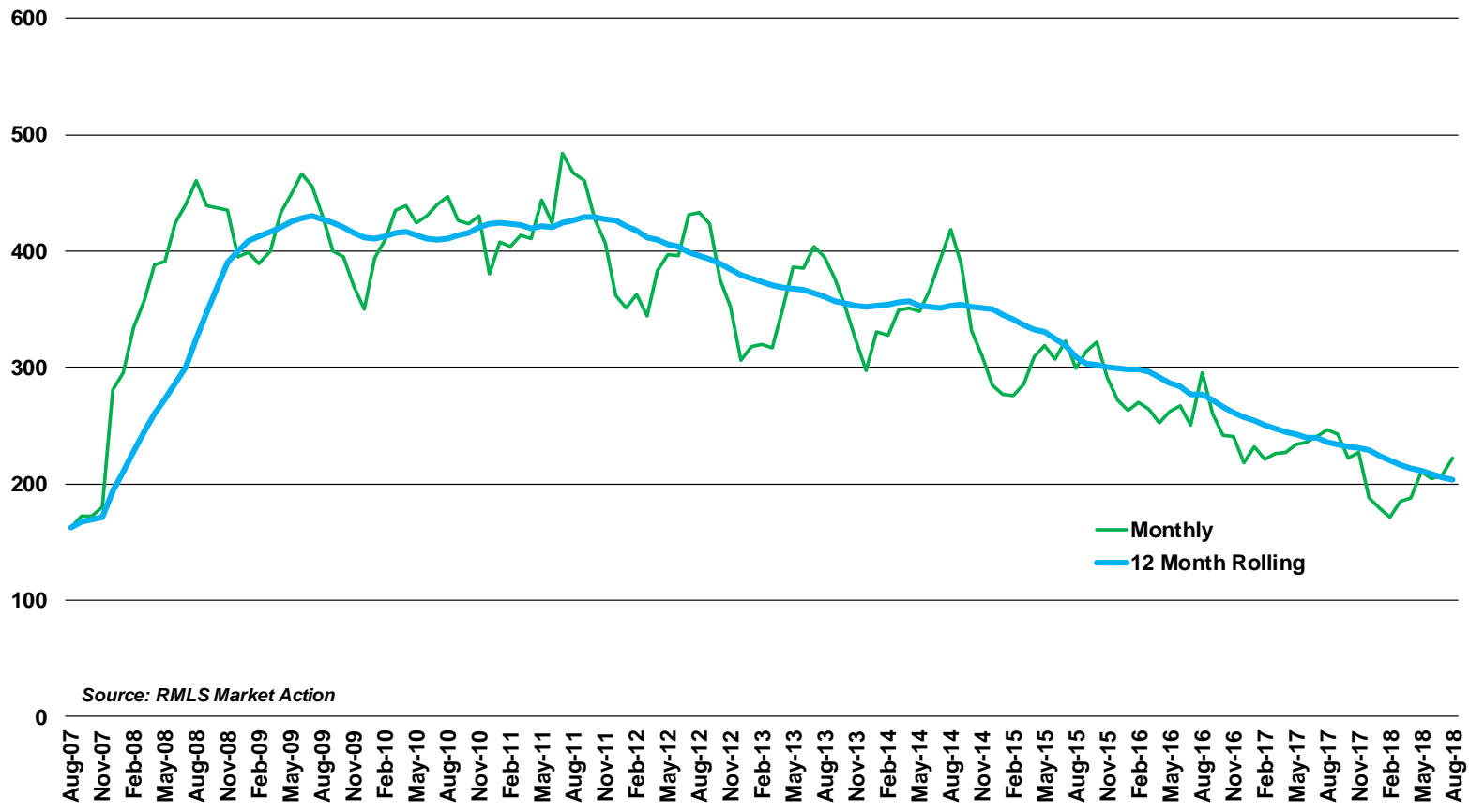
Baker County - Active Listings



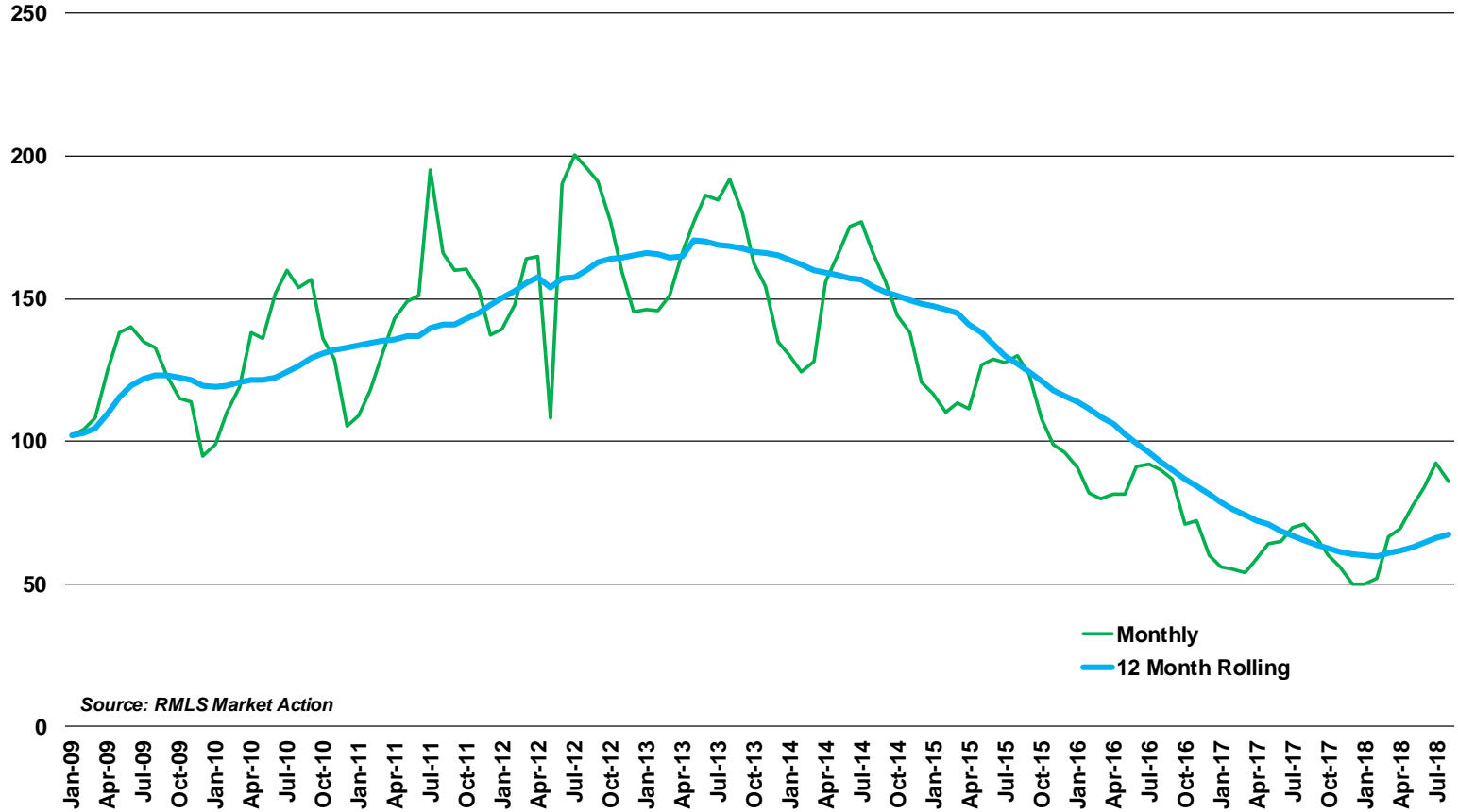
Union County - Active Listings



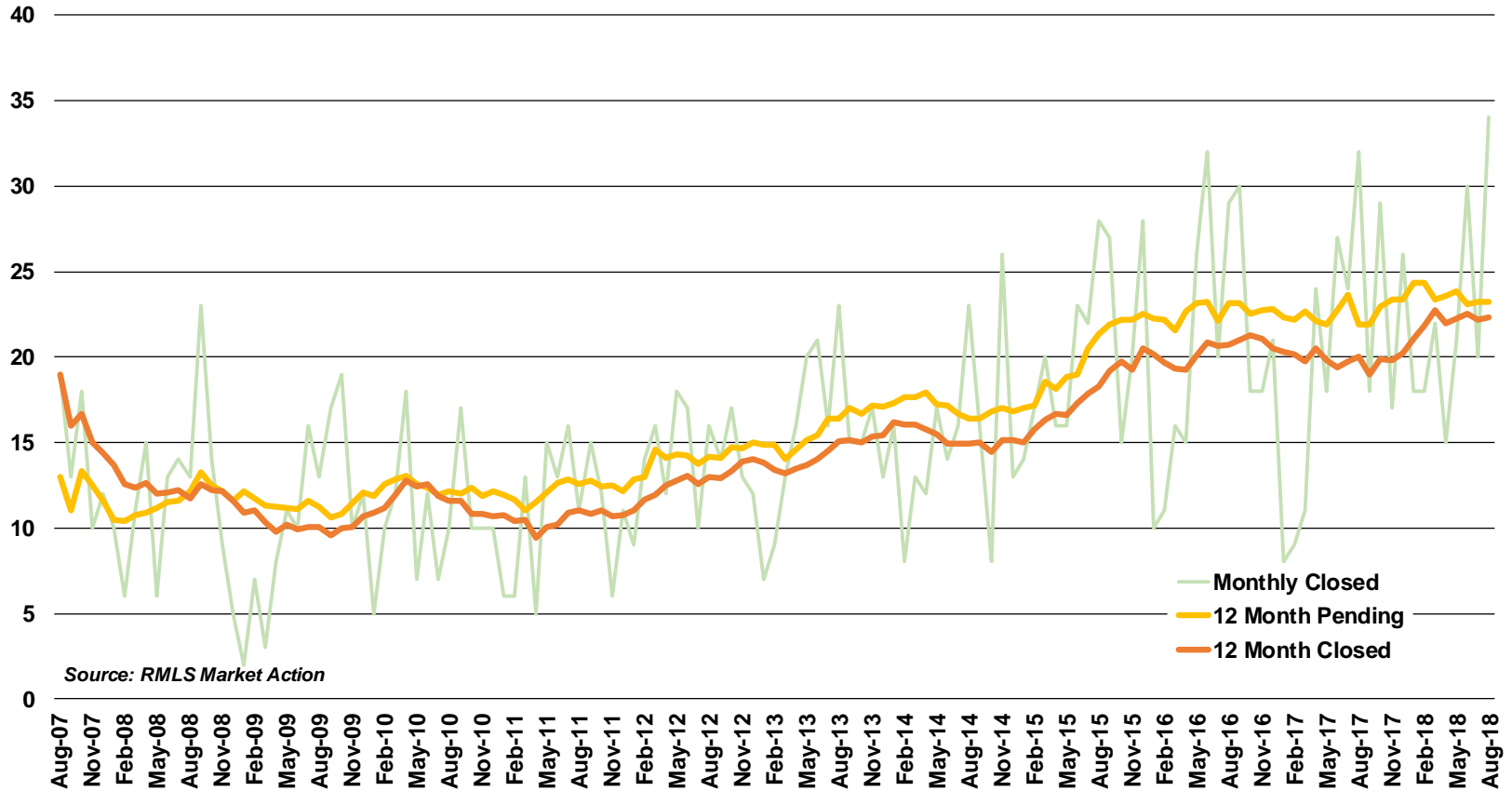
Umatilla County - Active Listings



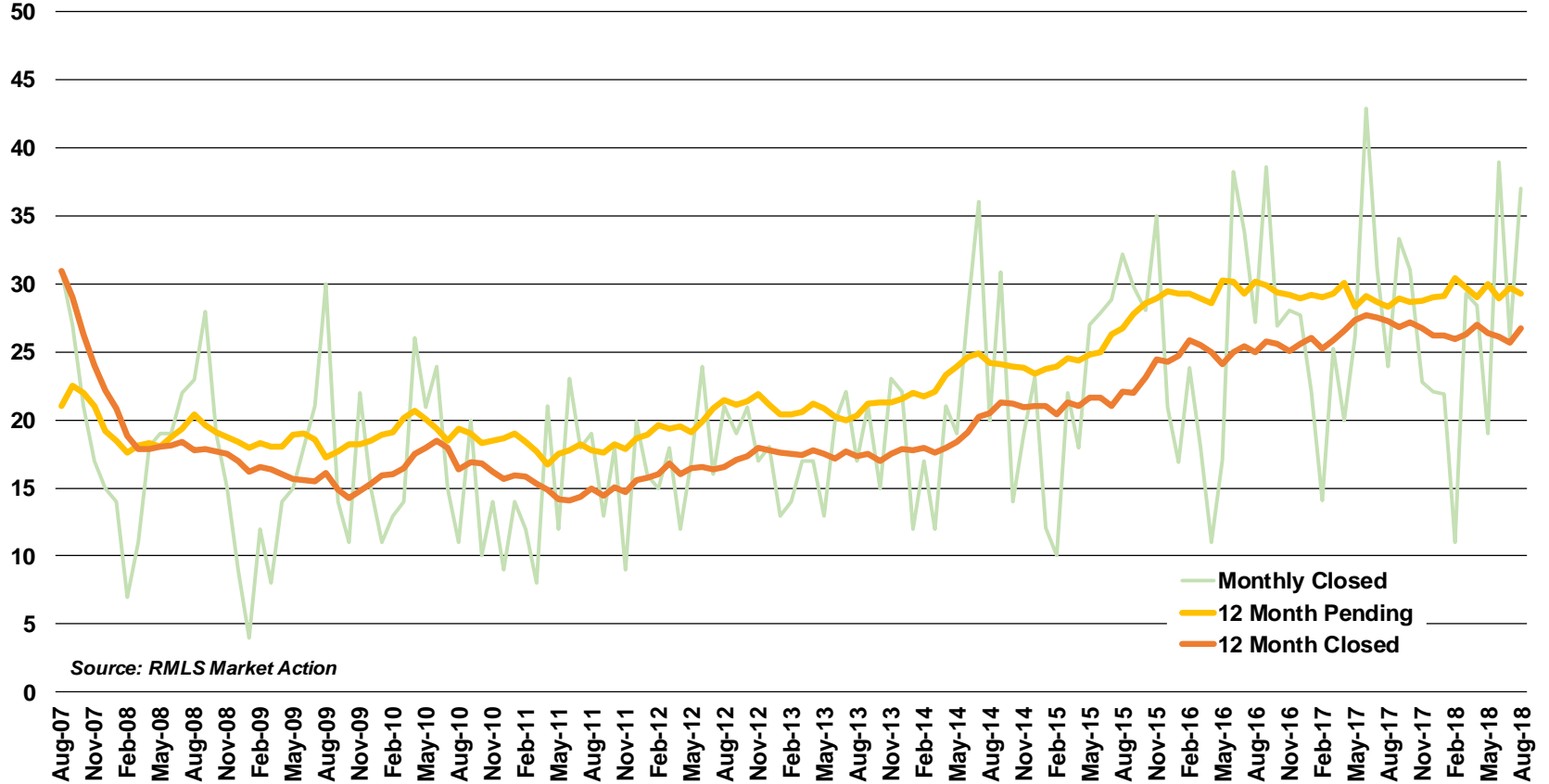
Wallowa County - Active Listings



Baker County - Closed and Pending Sales



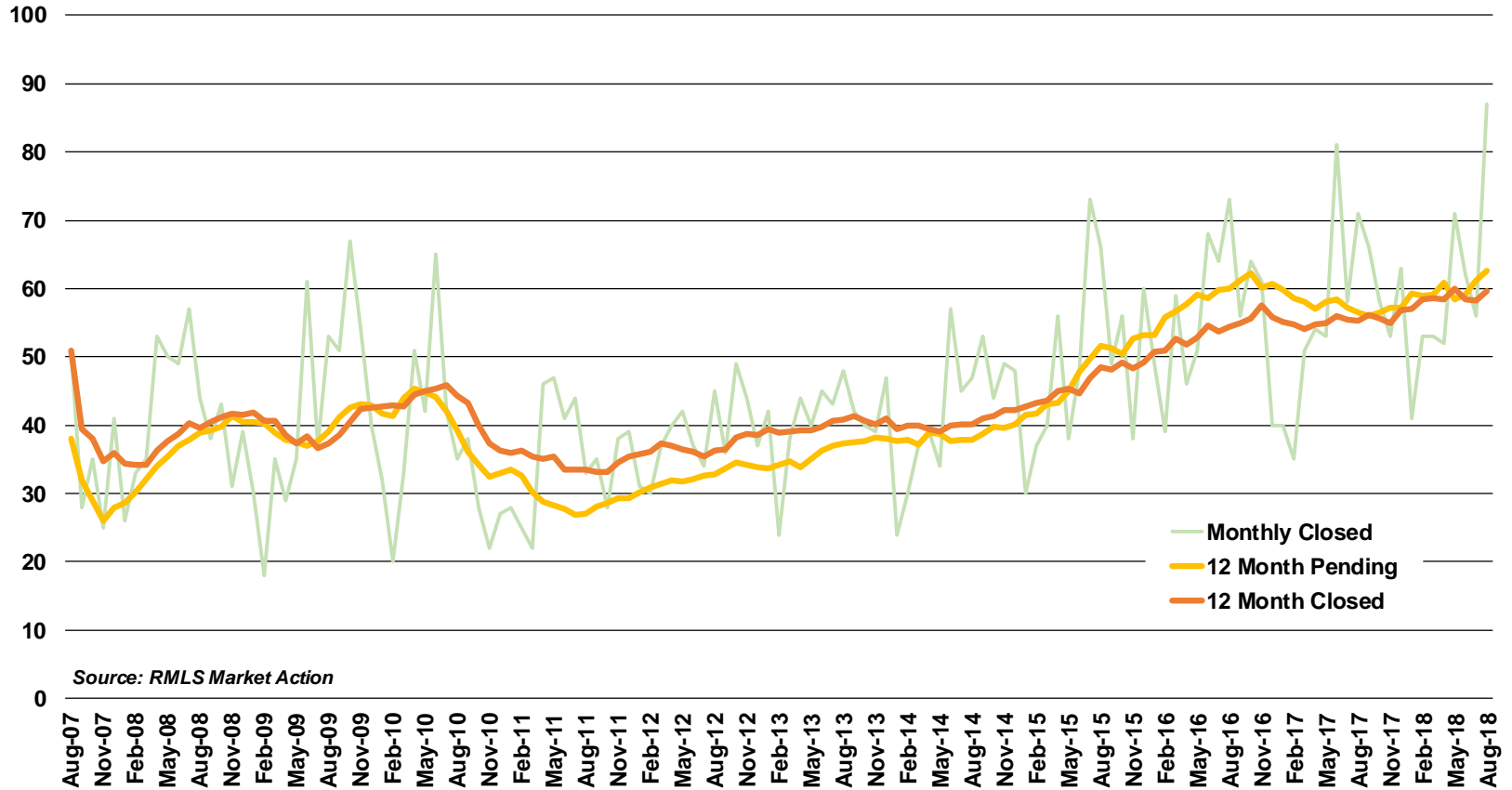
Union County - Closed and Pending Sales



Source: RMLS Market Action



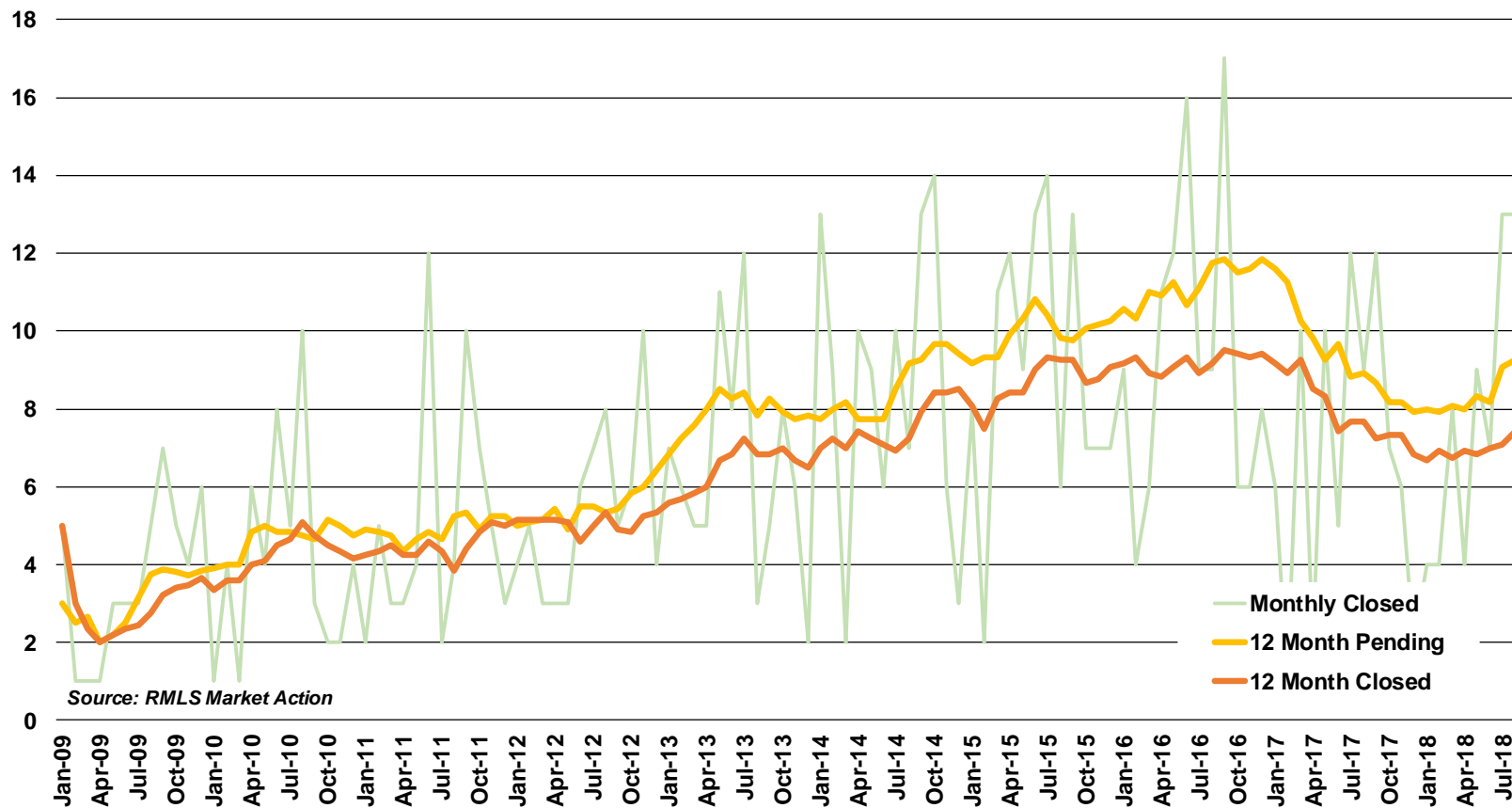
Umatilla County - Closed and Pending Sales



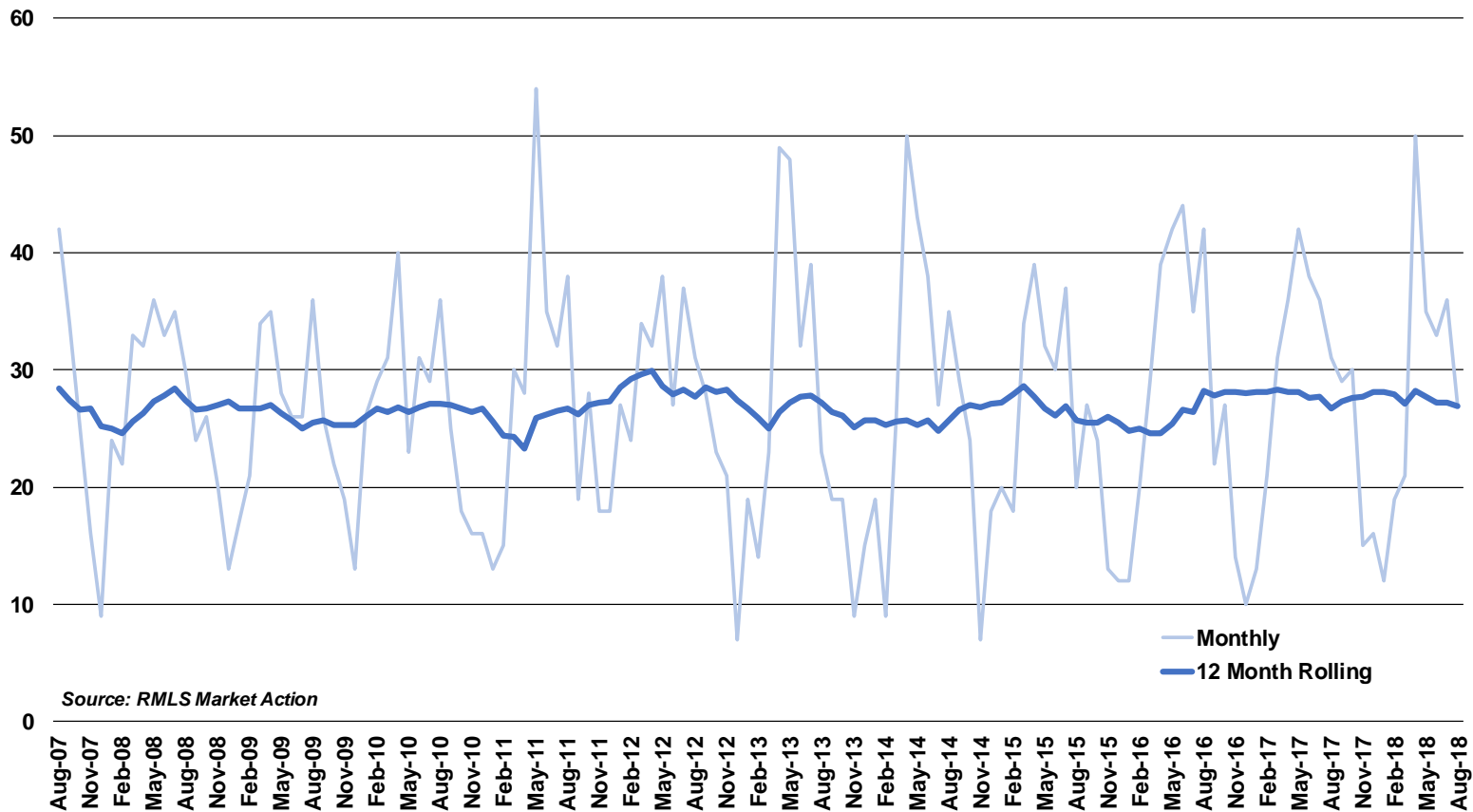
Source: RMLS Market Action



Walla Walla County - Closed and Pending Sales



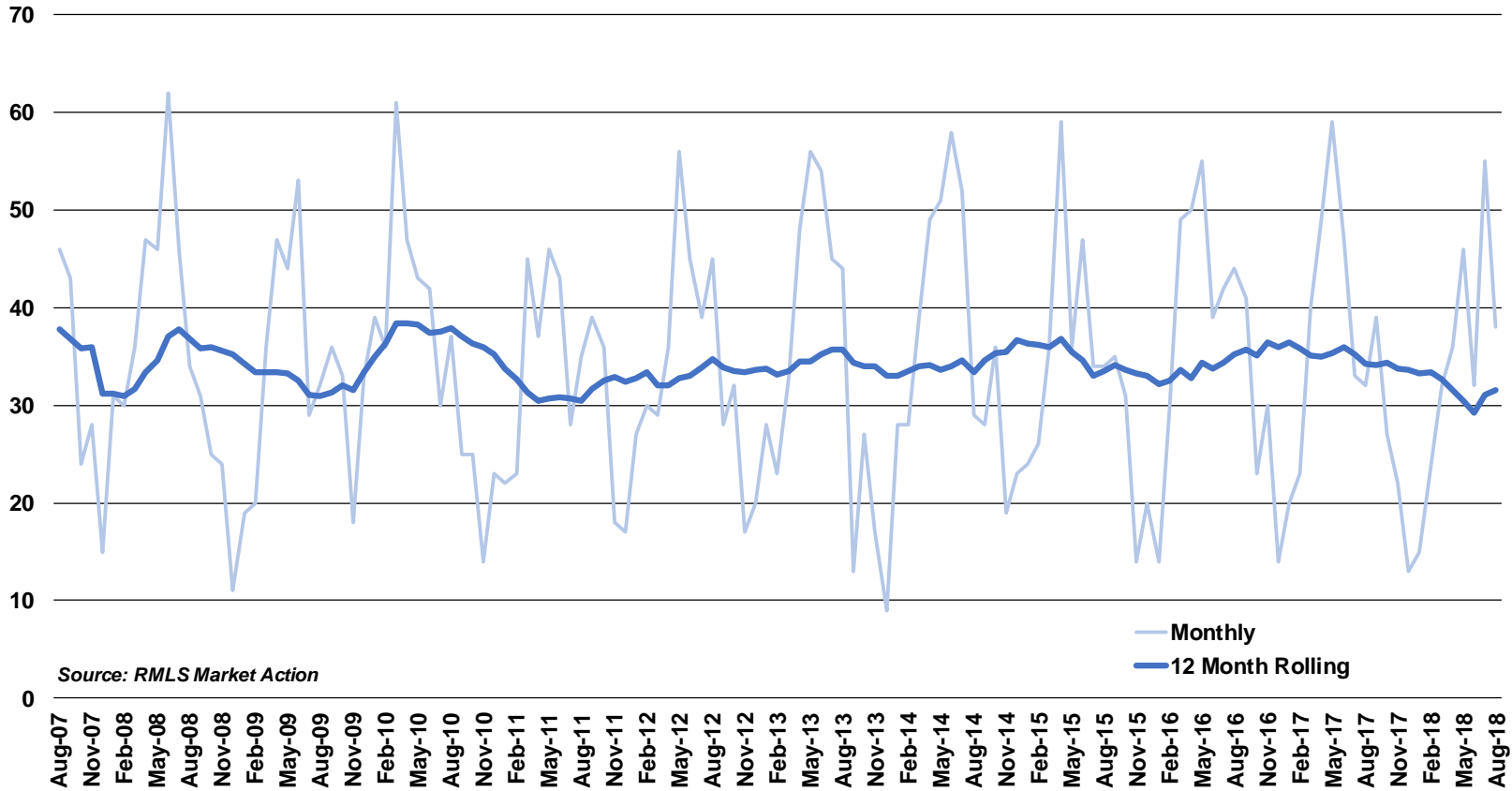
Baker County - New Listings



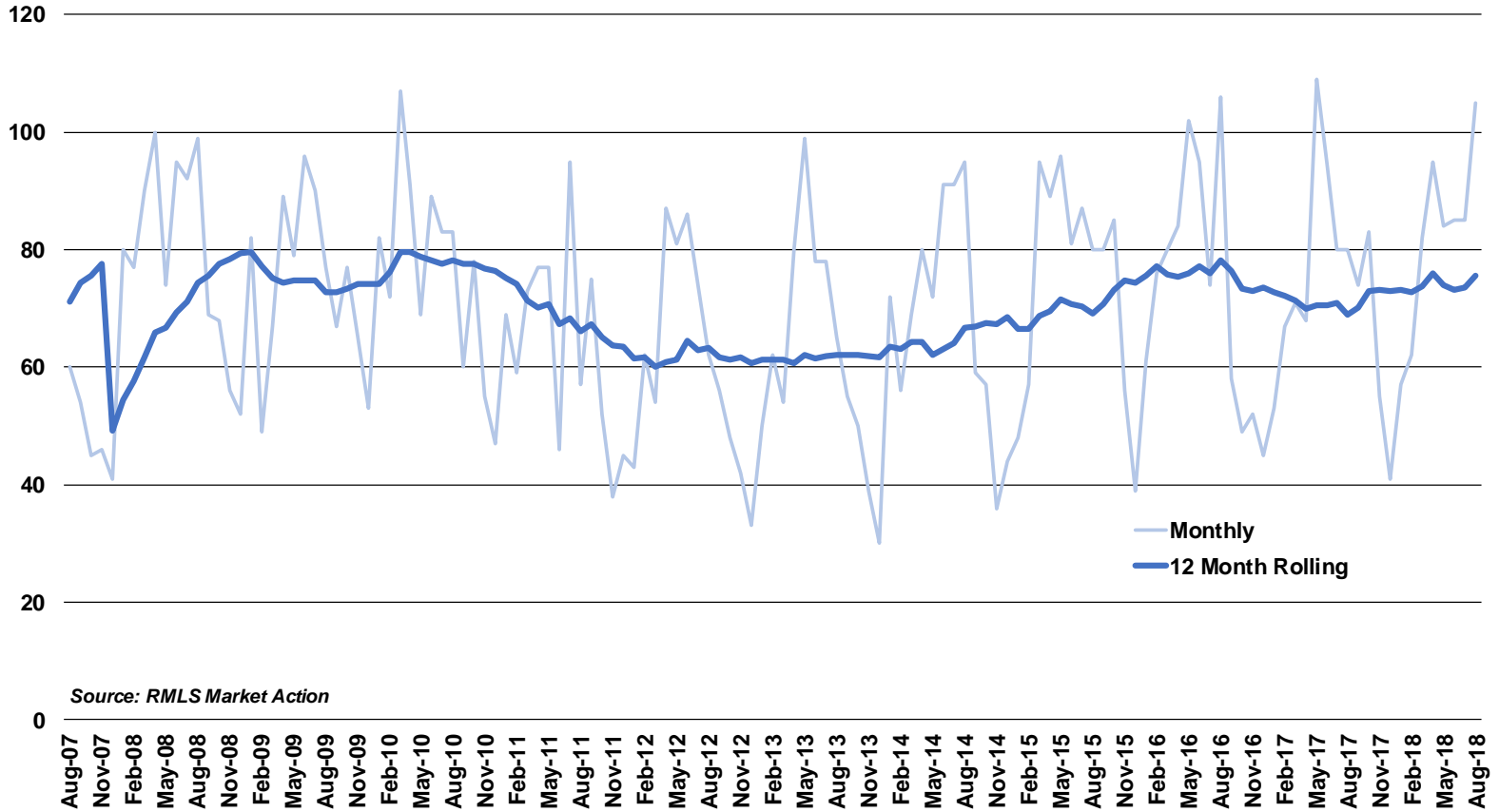
Source: RMLS Market Action



Union County - New Listings



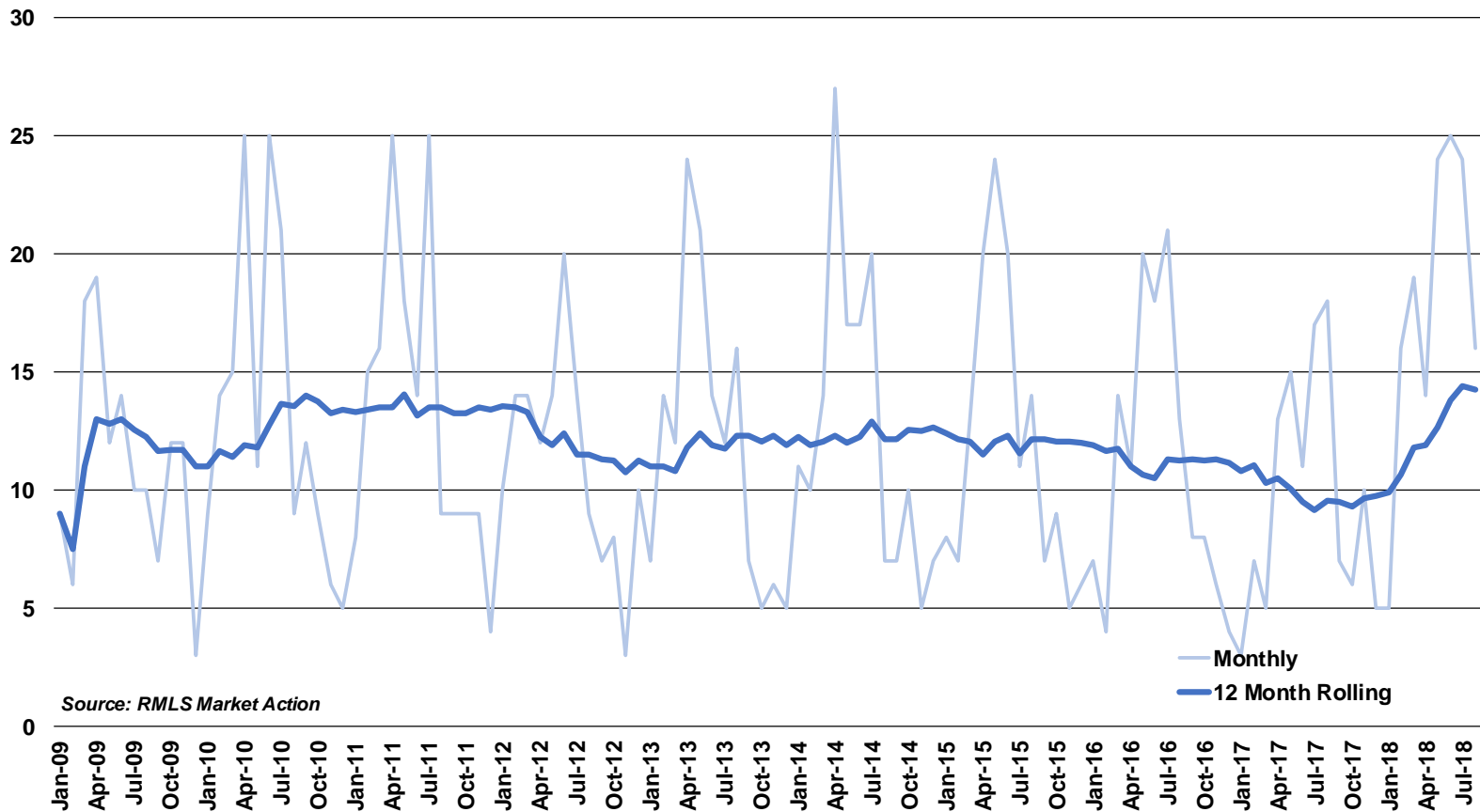
Umatilla County - New Listings



Source: RMLS Market Action



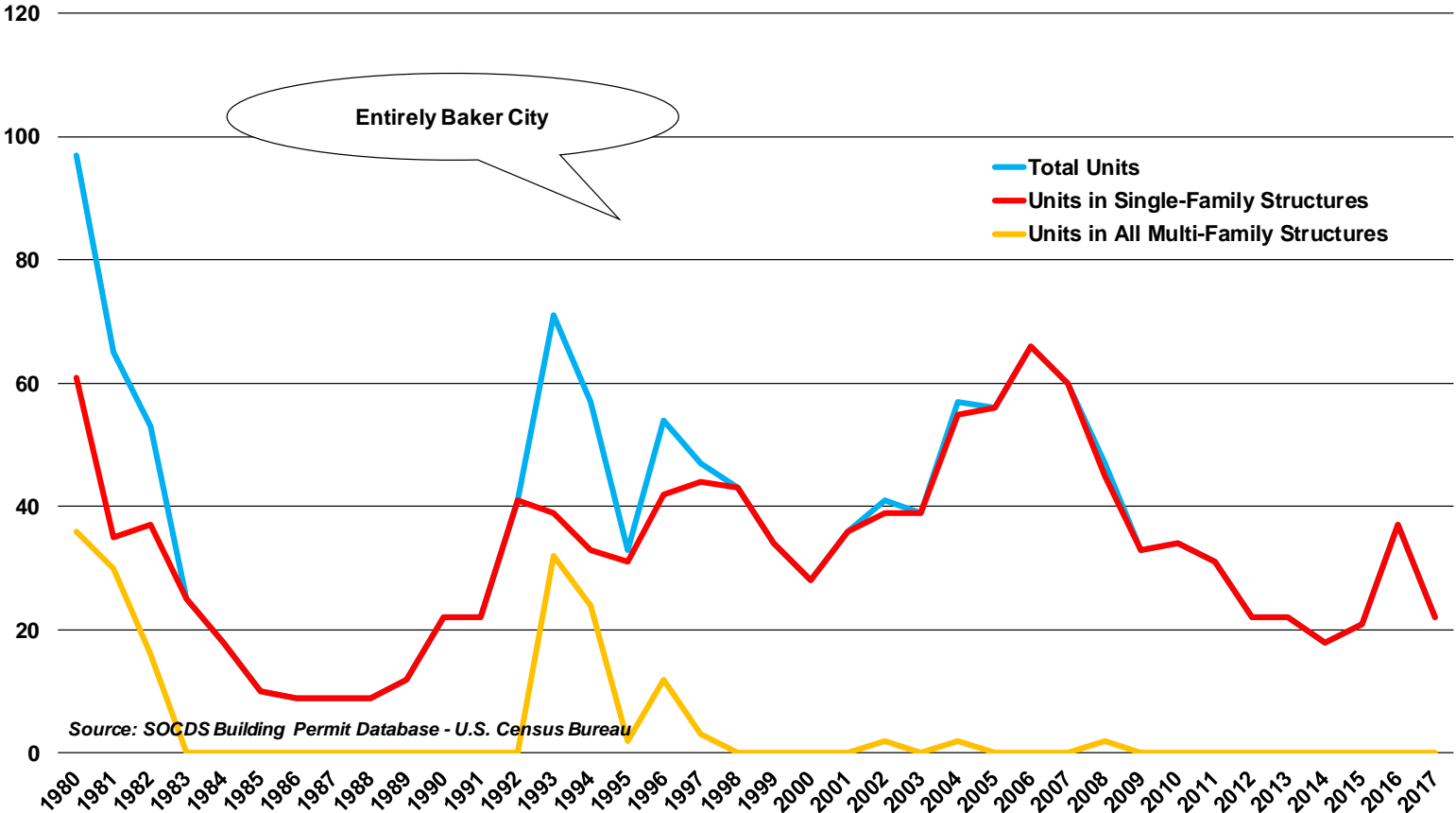
Wallowa County - New Listings



Source: RMLS Market Action



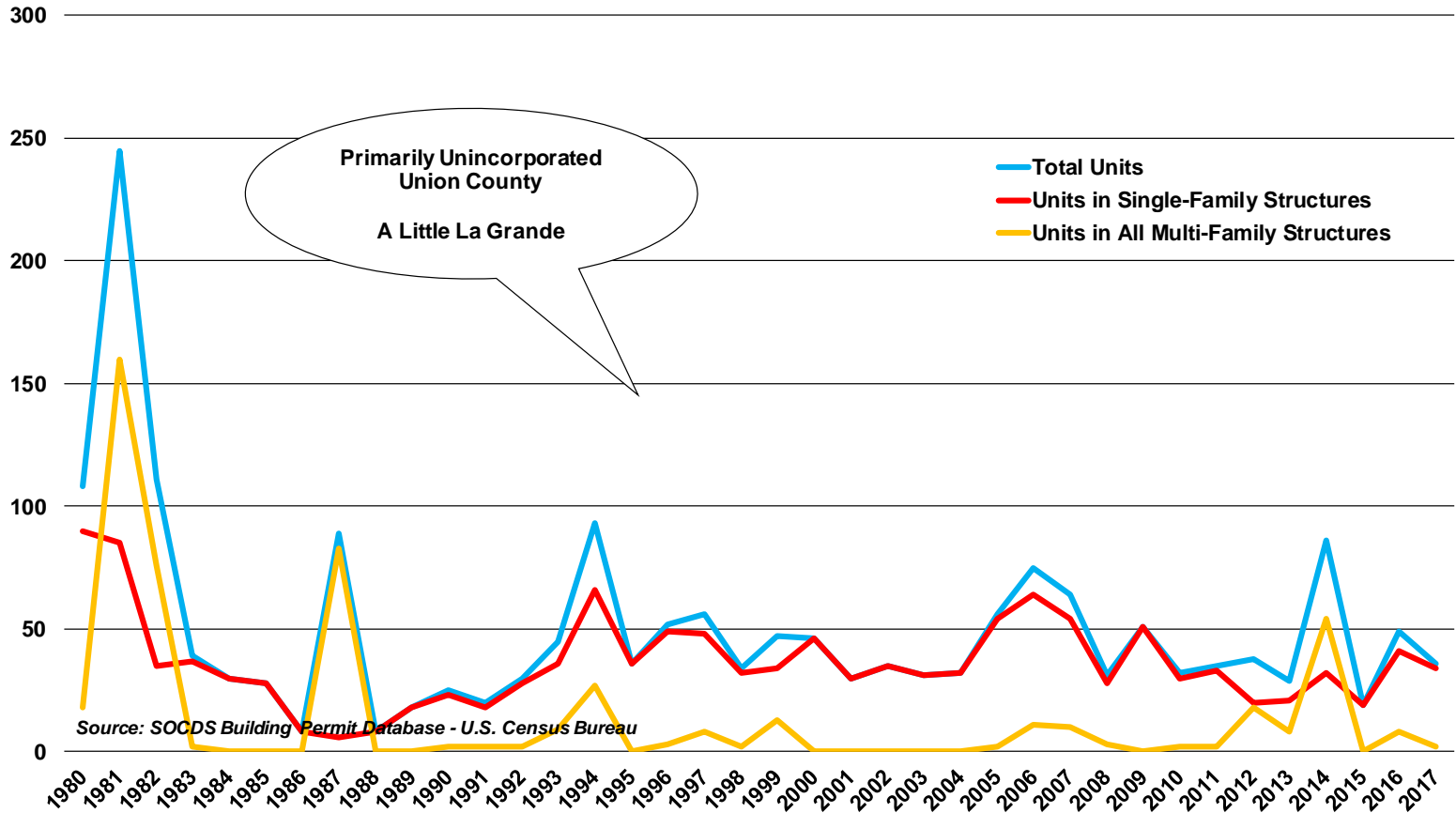
Baker County - Building Permits



Source: SOCDs Building Permit Database - U.S. Census Bureau



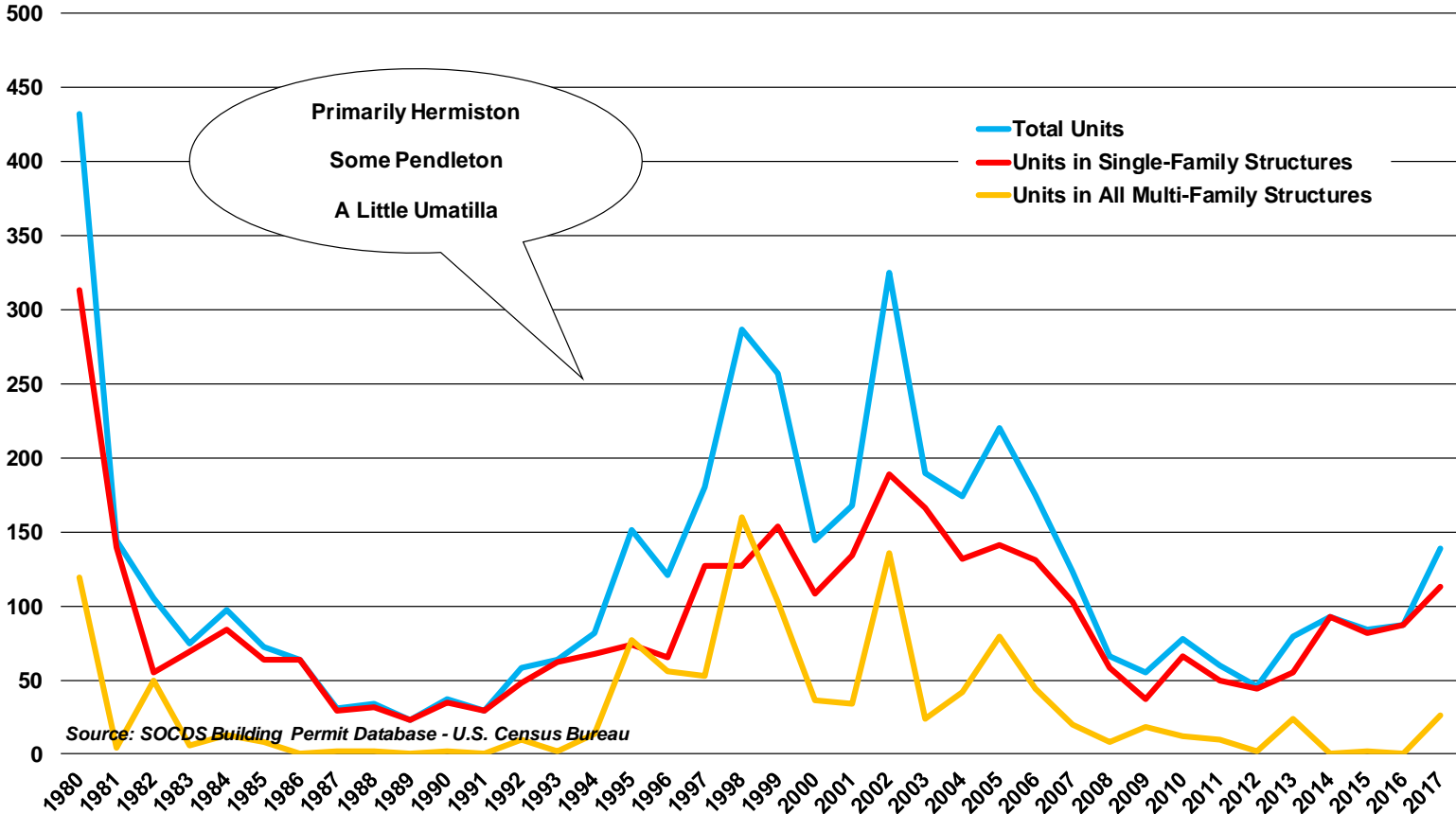
Union County - Building Permits



Source: SOCDS Building Permit Database - U.S. Census Bureau



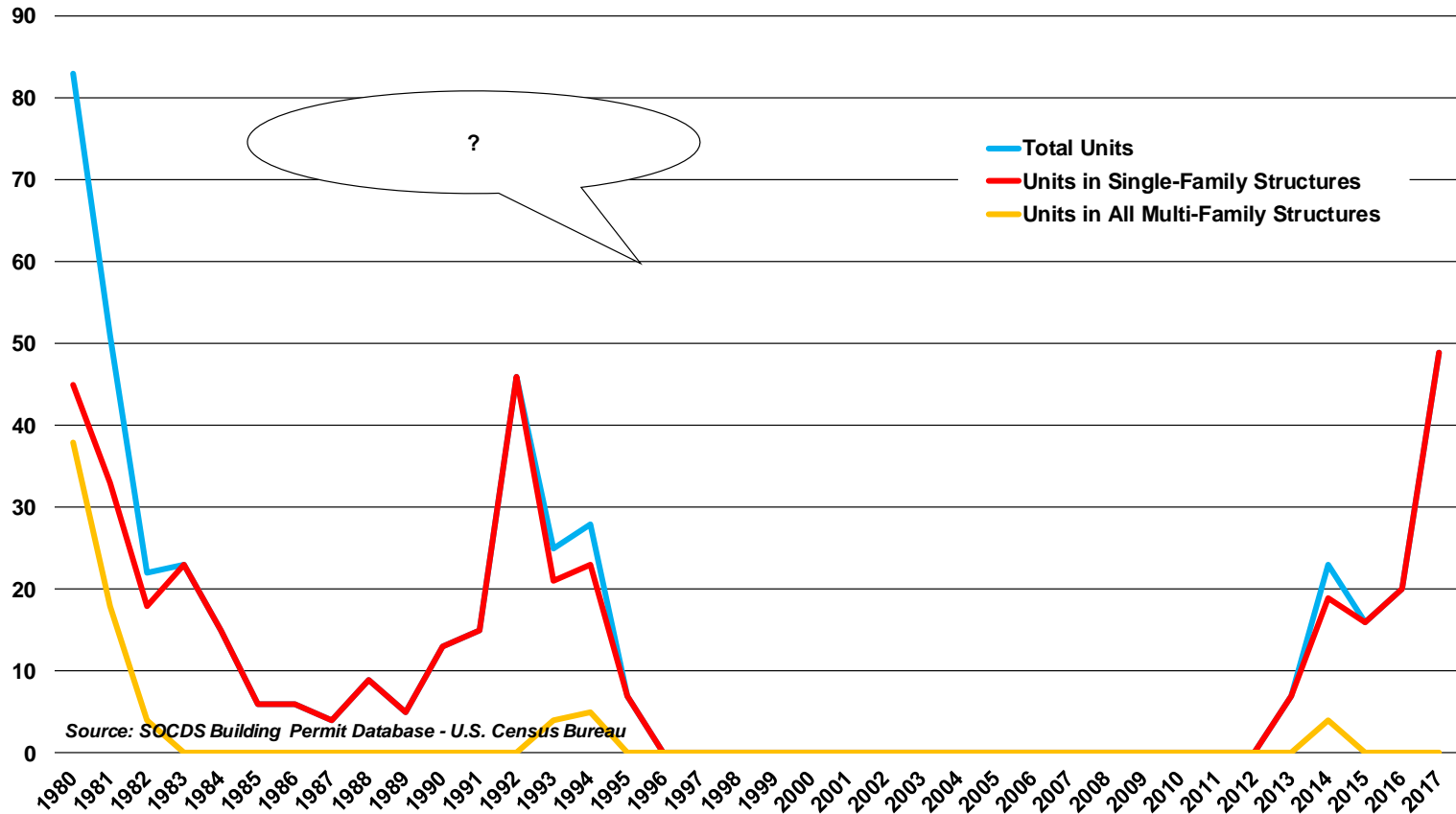
Umatilla County - Building Permits



Source: SOCDS Building Permit Database - U.S. Census Bureau



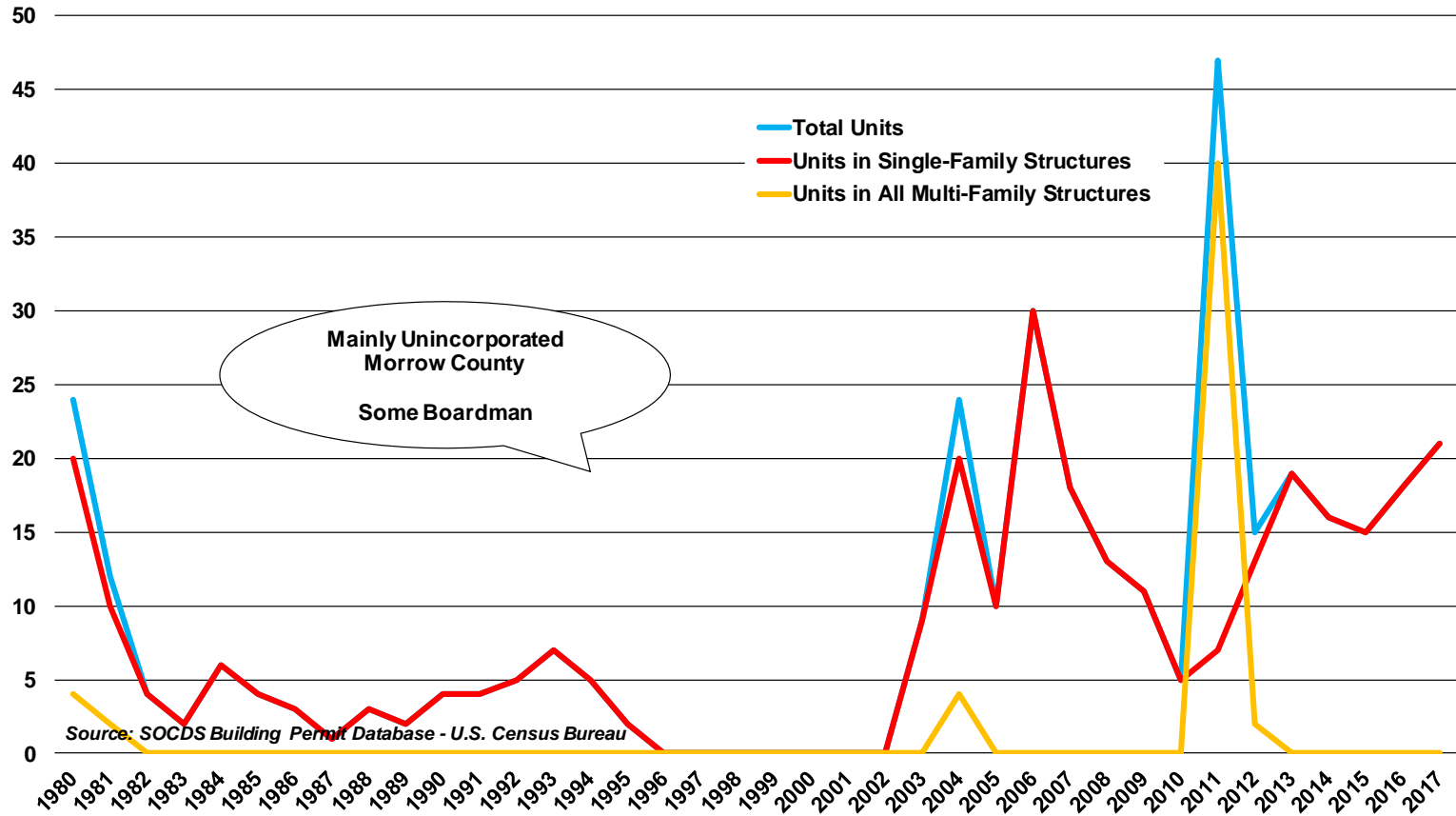
Wallowa County - Building Permits



Source: SOCDS Building Permit Database - U.S. Census Bureau



Morrow County - Building Permits



For More Information

Chris Rich, Eastern Oregon Regional Economist

Christopher.M.Rich@Oregon.gov

(541) 963-7111 ext. 226

www.Qualityinfo.org

Get the latest workforce and economic research delivered to your inbox!

Sign up at <https://www.qualityinfo.org/p-sofrm/>

Join the conversation:

OregonEmployment.blogspot.com

Twitter: @OREmployment

